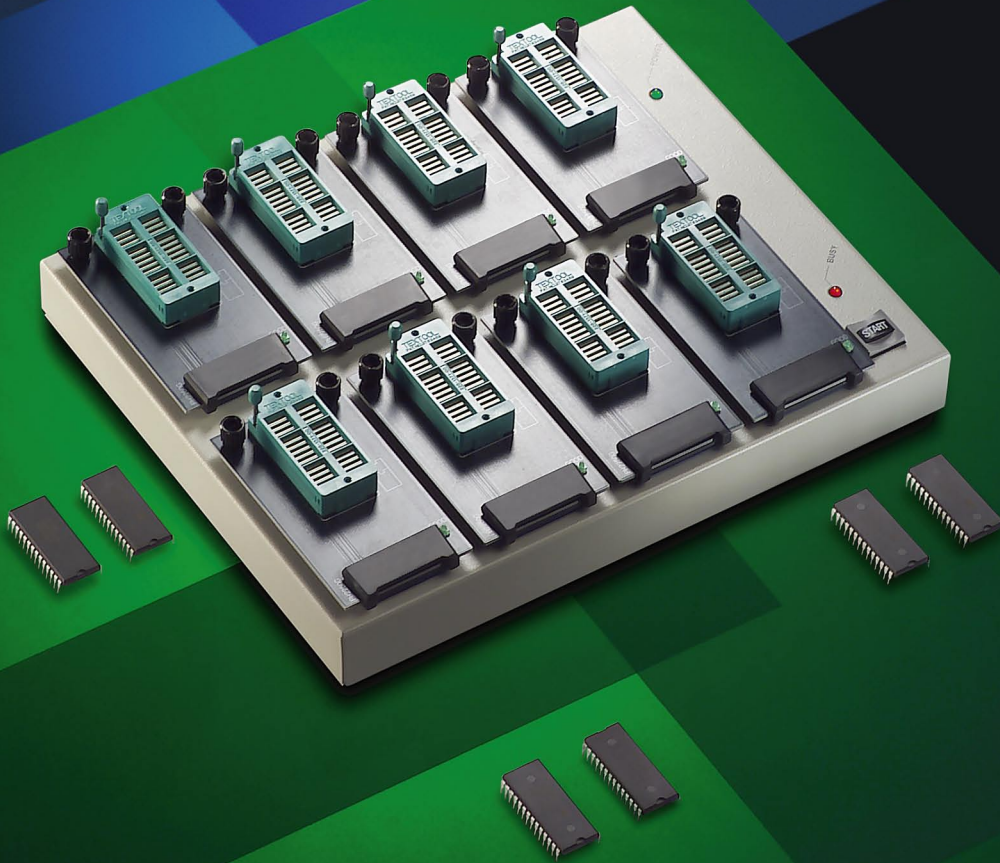




SofTec Microsystems™
Designed to Solve



Gang Programming
System Specific for
EPROM-, EEPROM-
and FLASH-Based
Microcontrollers

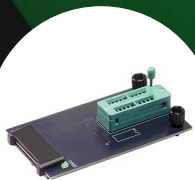
Single and
Upgradable
Base Unit

Device-Specific
Programming
Heads for All
Packages

Up to 8 Devices
Programmable
at Once

Fast Programming
Algorithms
Approved by
Silicon
Manufacturers

Fast Parallel Port
Connection



MP8011A Gang Programming System

www.softecmicro.com

MP8011A

Gang Programming System

Overview

The MP8011A Gang Programming System, in combination with a standard personal computer, is a full-featured, high-performance multiple (gang) programming system specific for EPROM-, EEPROM- and FLASH-based microcontrollers. MP8011A supports the concurrent programming of up to eight devices; different device packages can be accommodated through DIP, SDIP, SOP, SSOP, PLCC, QFP and TQFP adapters.

Philosophy

MP8011A is a PC-hosted programmer: it communicates with a Windows 9x/Me/2000/NT user interface through the LPT parallel port. The MP8011A hardware has two separate sections: a single, universal and upgradable base unit, ready to support current and future devices, and a number of device-specific programming heads. When you need to program a new device family or package you only need to change the programming heads, not the whole programmer.

Programming Heads

Programming heads are small printed circuit boards which connect to the programming sites on the base unit. Each programming head includes the appropriate socket—and the appropriate electrical connections—for programming a specific device. When selecting the device to be programmed, the MP8011A user interface tells you the code of the programming head required in order to program that device. Each programming head includes a “Good” LED which, at the end of an operation on the device, turns on indicating the operation has been successful.

Easy Upgrades

MP8011A is ready to support future devices. The upgrading operation for the support of new devices is as simple as downloading new releases of the PC software, always available from SofTec Microsystems web site, and eventually changing the device-specific programming heads. The modular approach (a general-purpose base unit and dedicated programming heads) represents the best tradeoff between cost and reliability, since it allows users to replace damaged heads at a minimum cost.

Protected Mode

Protected Mode simplifies the programming process by means of an easy, guided procedure that requires no special knowledge. Protected Mode is suitable for the programming of a large amount of devices. Entering and exiting the Protected Mode is password protected. When in Protected Mode, it is only possible to program devices by loading all of the required parameters from a Project file.

Supported Devices

The support for new devices is added constantly. For the latest list of supported devices, please visit our web site.

Programming Functions

Load File, Edit Buffers (Code and Data Memory), Edit Option Bytes, Read Master, Blank Check, Erase, Program, Protect, Verify, Auto, Statistics.

System Requirements

- A PC running Windows 9x, 2000, Me, NT or XP;
- 16 MB of RAM plus 20 MB of HD space;
- One free parallel port.

Ordering Information

MP8011A: the programmer base unit. Includes a power adapter, a parallel cable, a test board, the user interface software and user's manual. At least one programming head is required for operation.

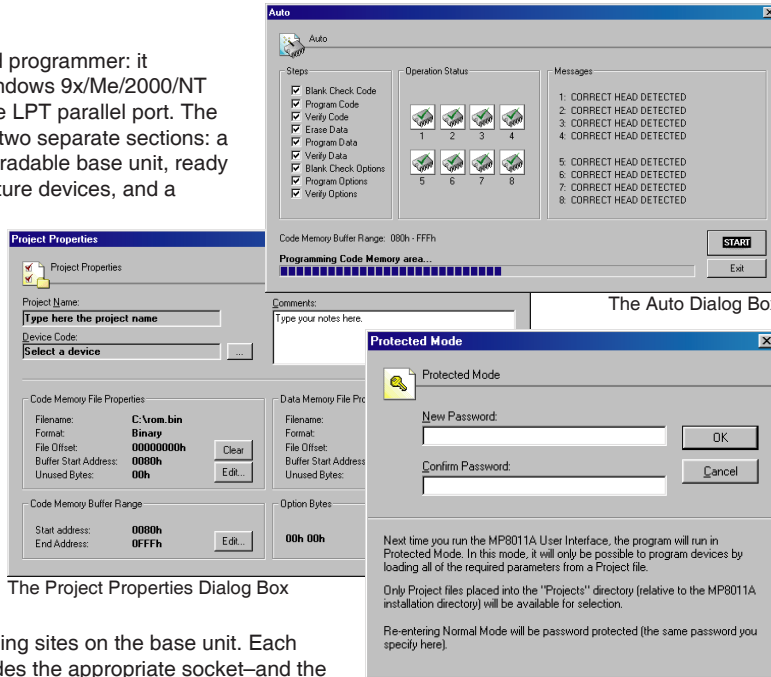
Programming Heads (optional): purchasable separately (code PHxxxxx), programming heads are device- and package-specific. The MP8011A base unit supports from one up to eight programming heads at once.

Electrical And Physical Specifications

Operating Voltage: 18 V DC
 Power Consumption: 600 mA
 Dimensions: 250 x 38 x 205 mm
 Weight: 1550 g
 Temperature Range: 0 - 40 °C

Software Upgrades

SofTec Microsystems is continuously adding the support for new devices to the MP8011A Gang Programming System. The latest version of the user interface is always downloadable for free from our web site.



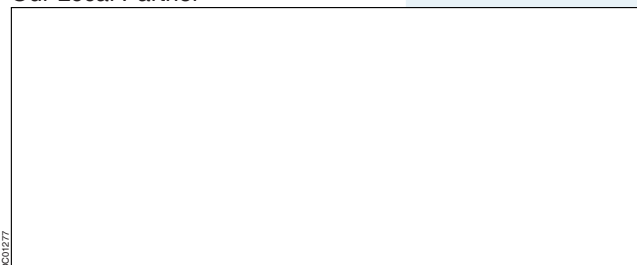
The Project Properties Dialog Box

Entering the Protected Mode



The MP8011A Standard Package

Our Local Partner



0001977



Web: <http://www.softecmicro.com>
 e-mail: info@softecmicro.com

