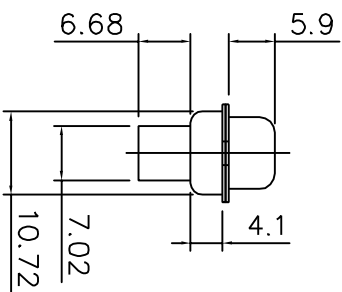
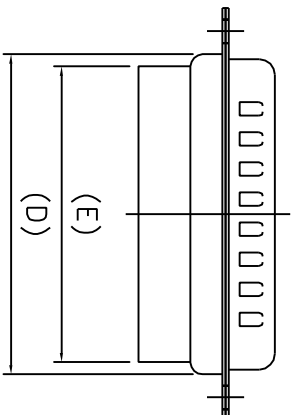
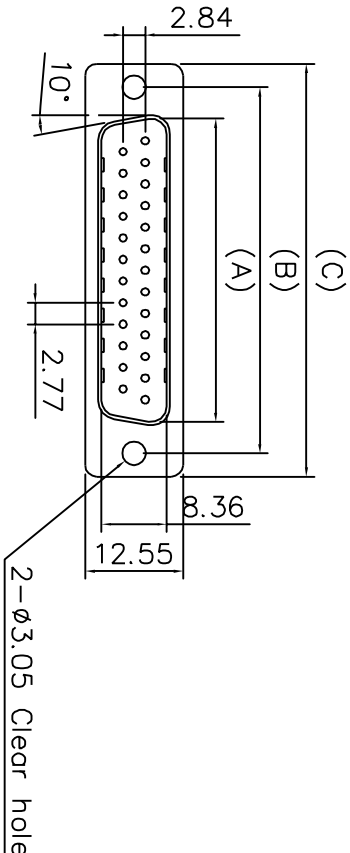


MALE

D-SUB CRIMP TYPE

Specifications

- Contact Resistance:  $\approx$  30m max. at DC
- 100mA
- Insulator Resistance: 1000M min. at DC
- 500V
- Current Rating: 5 AMP
- Dielectric Withstanding
- Voltage: AC 1000V For 1 minute
- Operating Temperature: -55°C ~ +105°C
- Contact: Brass
- Housing: PBT & 30% Glass Fiber (UL 94V-0)
- ROHS compliant
- MSL components : level 3



L777RR -- P

Shell size

Nber of cts

09-15-25-37

E = 09 ways  
 A = 15 ways  
 B = 25 ways  
 C = 37 ways

Dimension

Position	A	B	C	D	E
9	16.92	24.99	30.81	19.20	15.45
15	25.50	33.32	39.14	27.70	24.45
25	38.96	47.04	53.04	41.10	38.00
37	55.42	63.50	69.32	57.30	53.96

TOLERANCE	m/m	APPROVALS	DATE	TITLE	UNIT	SIZE	DRAWING N°	AMPHENOL	REV
X	0.05	DESIGNED CDU	17/05/06	RR SERIES D-SUB CONNECTOR CRIMP VERSION PLUG	MM	A4	L777RR - - P----	AMPHENOL SOCAPEX Dole Plant	A
X.X	0.1	CHECKED J.F.L	17/05/06						
X.XX	0.3	APPROVED J.F.L	17/05/06						
UNLESS OTHERWISE SPECIFIED									