

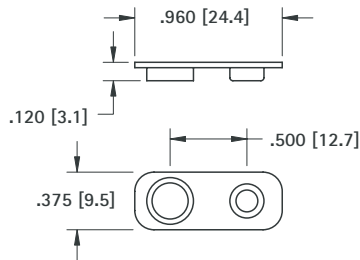
# PROTECTIVE BATTERY CAP

- Protects 9 Volt batteries and battery packs when they are not in use
- Snap-fits onto battery contacts
- Both male and female contacts are covered, minimizing physical damage which can occur during battery handling, shipping and storage
- Shields the battery contacts and reduces the potential of a short circuit between battery poles
- Protects sensitive electronic equipment, systems and circuits, cap prevents unwanted electrical discharges
- Protects the battery contacts from damage due to dust, dirt and contamination

**MATERIAL:**

Impact Resistant Polypropylene, Black

**CAT. NO. 96**

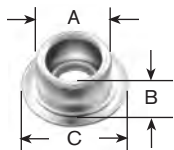


# BATTERY SNAP-ONS

For most electronic applications requiring a quick connect and disconnect of circuit. Commonly used with 9 Volt or other batteries designed with snap fasteners. Ideal for temporary or permanent means of connecting without soldering. Can be cascaded together for multiple connections.

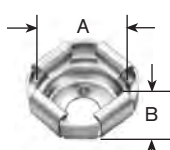
**SOCKET OR STUD ONLY**

**FIG. 1**



Stud only

**FIG. 2**



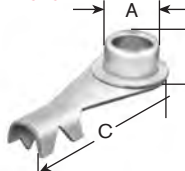
Socket only

CAT. NO.	FIG. NO.	A	B	C	HOLE	SIZE	MATERIAL
261*	1	.225 (5.7)	.135 (3.4)	.312 (7.9)	.093 (2.4)	Junior	Steel, Nickel Plate
269*	2	.205 (5.2)	.156 (4.0)	—	—	Junior	Steel, Nickel Plate
262	1	.283 (7.2)	.143 (3.6)	.425 (10.8)	.125 (3.2)	Senior	Brass, Nickel Plate
270	2	.265 (6.7)	.156 (4.0)	—	—	Senior	Brass, Nickel Plate

\*Use Jr. Socket and stud for standard 9 Volt Battery

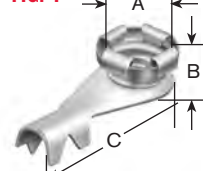
**SOCKET OR STUD W/CRIMP LUG**

**FIG. 3**



Stud w/Crimp Lug

**FIG. 4**



Socket w/Crimp Lug

CAT. NO.	FIG. NO.	A	B	C	SIZE	MATERIAL
263*	3	.225 (5.7)	.170 (4.3)	.790 (20.1)	Junior	Stud: Steel, Nickel Plate Lug: Brass, Tin Plate
271*	4	.205 (5.2)	.200 (5.1)	.790 (20.1)	Junior	Stud: Steel, Nickel Plate Lug: Brass, Tin Plate
264	3	.283 (7.2)	.185 (4.7)	.840 (21.3)	Senior	Stud: Brass, Nickel Plate Lug: Brass, Tin Plate
272	4	.265 (6.7)	.185 (4.7)	.835 (21.2)	Senior	Stud: Brass, Nickel Plate Lug: Brass, Tin Plate

\*Use Jr. Socket and stud for standard 9 Volt Battery

DIMENSIONS ARE FOR REFERENCE ONLY

# DUAL 9 VOLT BATTERY STRAP

This dual battery strap is pre-wired for connecting two 9 Volt batteries. Base made from fibre material with steel, nickel plated contacts. Wires have tinned copper conductors, PVC insulation and the ends are stripped for easy connection. Wires meet UL/CSA #1061 requirements.

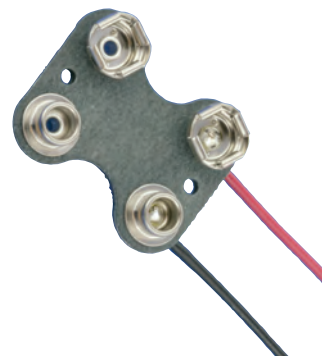
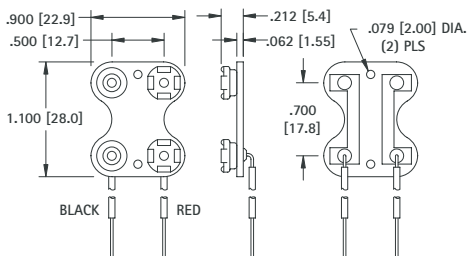
**SPECIFICATIONS**

**Contacts:** Steel, Nickel Plate  
**Wire:** #22 AWG, 7/30 Prebond  
**End Strip:** .375 (9.5) Long, Tinned

CAT. NO.	*LEAD LENGTH
227	7.00 (177.8)

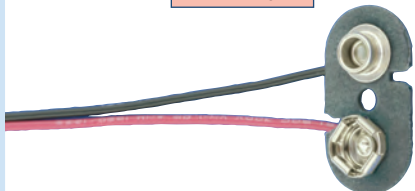
\*Tolerance on lead length +/- .250 (6.4)

**PARALLEL**



# PREMIUM 9 VOLT BATTERY STRAPS

**FIBRE BASE**

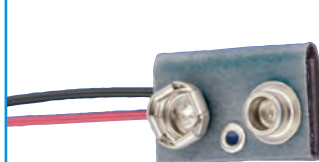


CAT. NO.	*LEAD LENGTH
68	NONE
72-4	4.00 (101.6)
72	7.00 (177.8)
72-8	8.00 (203.2)

**Base Size:**  
1.025 (26.0) x .535 (13.6)  
.062 (1.57) thick  
**Contacts:** Steel, Nickel Plate  
**Wire:** #22 AWG, 7/30 Prebond  
**End Strip:** .375 (9.5) Long, Tinned

\*Tolerance on lead length +/- .250 (6.4)

**FIBRE COVER**



- Fully Insulated
- Flexible assembly

**I - STYLE**

CAT. NO.	*LEAD LENGTH
83-4	4.00 (101.6)
83	6.50 (165.1)
83-8	8.00 (203.2)

**Cover Size:**  
.900 (22.9) x .575 (14.6)  
**Contacts:** Steel, Nickel Plate  
**Wire:** #22 AWG, 7/30 Prebond  
**End Strip:** .375 (9.5) Long, Tinned

\*Tolerance on lead length +/- .250 (6.4)

**T - STYLE**

CAT. NO.	*LEAD LENGTH
85-4	4.00 (101.6)
85-6	6.50 (165.1)
85-8	8.00 (203.2)

**Cover Size:**  
.900 (22.9) x .575 (14.6)  
**Contacts:** Steel, Nickel Plate  
**Wire:** #22 AWG, 7/30 Prebond  
**End Strip:** .375 (9.5) Long, Tinned

\*Tolerance on lead length +/- .250 (6.4)

# SHIELDED 9 VOLT BATTERY STRAPS

- Insulates and shields 9 Volt battery snap-on connector contacts
- Assures safe secure use, reduces the potential of short circuits and prevents tampering with battery contacts
- Protects circuits, prevents unwanted electrical discharge due to unintended grounding
- Protects battery contacts from dust, dirt, and physical damage
- Ideal for rugged applications, made of high impact molded plastic with integral wire lead strain relief

Modifications available with different wire lengths.

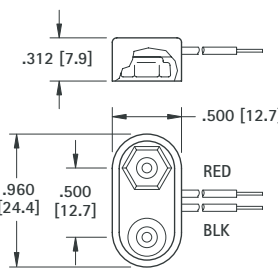
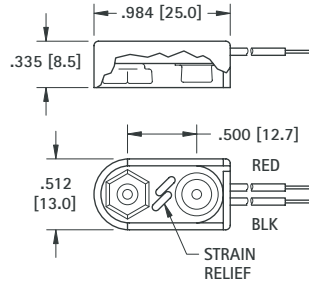
## SPECIFICATIONS

Base: ABS

Male/Female Contacts: Brass, Nickel Plate

Wires (Red & Black): #26 AWG, Tinned, .187 (4.8) end strip, UL/CSA1007

\*Tolerance on lead length +/- .250 (6.4)



I STYLE		T STYLE	
MOLDED		MOLDED	
CAT. NO.	*LEAD LENGTH	CAT. NO.	CAT. NO.
84-4	4.00 (101.6)	81-4	
84-6	6.00 (152.4)	81-6	
84-8	8.00 (203.2)	81-8	

## PREMIUM 9 VOLT BATTERY STRAPS

- Fully Assembled
- Rigid Assembly
- Ideal for rugged applications, made of high impact molded plastic with integral wire lead strain relief

Rigidly constructed. Nickel plate, male and female contacts. Female contacts are spring temper. Accepts numerous insertions to meet U.L. approved standards. Provides excellent mechanical strength and low contact resistance. Wires have tinned copper conductors, PVC insulation and the ends are stripped for easy connection.

Wires are rated to 176°F (80°C) and 300V and meet UL/CSA #1061/#1007 requirements.

Modifications available with different wire lengths.

## SPECIFICATIONS

Contacts: Phosphor Bronze, Nickel Plate

Wire: #26 AWG, 7/34

End Strip: .250 (6.4) Long, Tinned

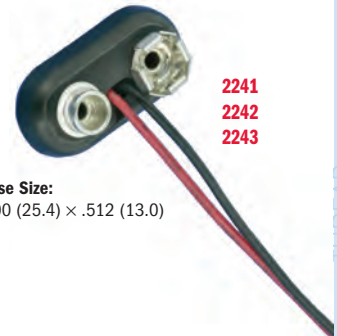
Base: Polyethylene

\*Tolerance on lead length +/- .250 (6.4)



Base Size:  
1.062 (27.0) x .512 (13.0)

I STYLE		T STYLE	
MOLDED		MOLDED	
CAT. NO.	*LEAD LENGTH	CAT. NO.	CAT. NO.
2238	4.00 (101.6)	2241	
2239	6.00 (152.4)	2242	
2240	8.00 (203.2)	2243	



Base Size:  
1.00 (25.4) x .512 (13.0)

## ECONOMY 9 VOLT BATTERY STRAPS

- Fully Assembled
- Rigid Assembly

When product cost is of the utmost importance these economy battery straps will suit your needs. Brass contacts, nickel plated with vinyl or ABS covering. Wires have tinned copper conductors, PVC insulation and the ends are stripped for easy connection. Wires meet UL/CSA #1007 requirements.

Modifications available with different wire lengths

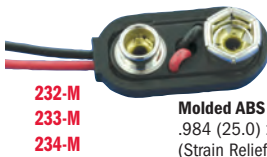
## SPECIFICATIONS

Contacts: Brass, Nickel Plate

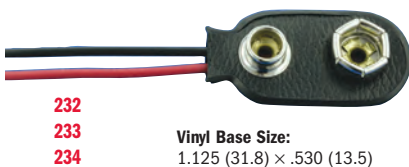
Wire: #26 AWG, 7/34

End Strip: .250 (6.4) Long, Tinned

\*Tolerance on lead length +/- .250 (6.4)



Molded ABS Base Size:  
.984 (25.0) x .469 (11.9)  
(Strain Relief)

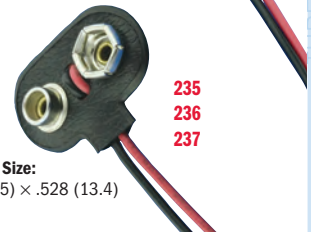


Vinyl Base Size:  
1.125 (31.8) x .530 (13.5)

I STYLE			T STYLE		
MOLDED VINYL			MOLDED VINYL		
CAT. NO.	CAT. NO.	*LEAD LENGTH	CAT. NO.	CAT. NO.	CAT. NO.
232-M	232	4.00 (101.6)	235-M	235	
233-M	233	6.00 (152.4)	236-M	236	
234-M	234	8.00 (203.2)	237-M	237	



Molded ABS Base Size:  
.965 (25.0) x .469 (11.9)  
(Strain Relief)



Vinyl Base Size:  
1.000 (24.5) x .528 (13.4)