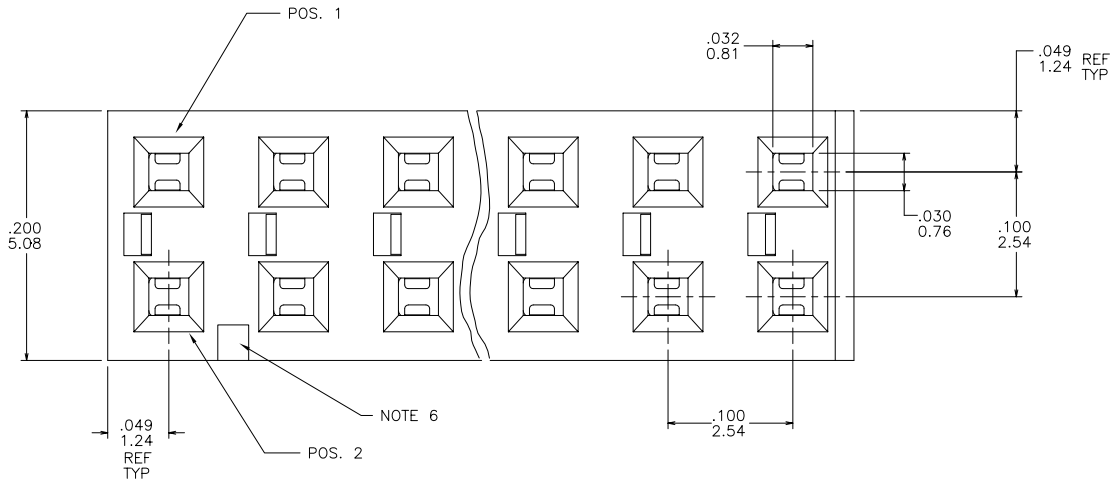
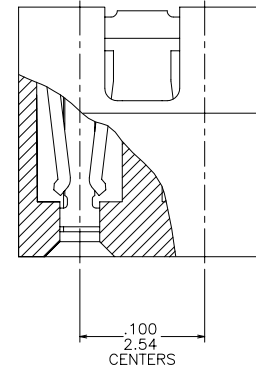
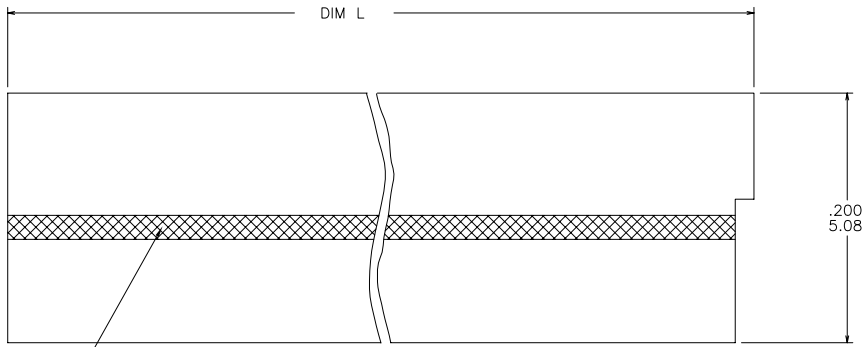




FCIconnect.com

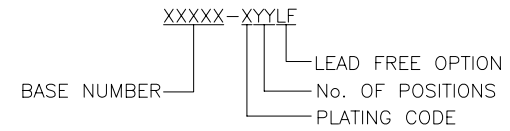
Copyright FCI



mat'l. code				surface ISO 1302 ✓		tolerance ISO 406 ISO 1101		projection ⊕-∠		product family JUMPER	
ltr	ecn	no	dr	date		tolerances unless otherwise specified		INCH/MM		title	
F	V50113	LSS	2/1/95	angles		.XX±.01/.3		INCH/MM		D. R. MULTI POSITION PROFILE JUMPER ASS'Y	
G	V50245	LSS	2/22/95	linear		.XXX±.005/.13		scale 20:1		dwg no	
H	V61309	EPK	10/1/96	0°±2'		.XXXX±.0020/.051		scale 20:1		sheet 1 of 2	
J	V80322	SAR	5/15/98	dr	S. RAMP	2/18/91		FCI		size A3	
K	M05-0205	ERE	9/30/05	enr	M.HAHN	2/18/91				69145	
L	M06-0238	MN	6/17/06	chr	M.HAHN	2/18/91				type	
M	M06-0389	AGS	10/4/06	appd	M.HAHN	2/18/91				Product Customer Drawing	
sheet	revision	M	M								
index	sheet	1	2								

form: A3

PRODUCT No.	NO. OF POS.	DIM L	DESC PRODUCT NUMBER ON -8XX SERIES ONLY	SELECT LOADING	LEAD FREE OPTION
69145-X04	2 X 2	.1980/5.029	WWWWW-04	NO	NOTE 5
-X06	2 X 3	.2980/7.569	WWWWW-06	NO	
-X08	2 X 4	.3980/10.109	WWWWW-08	NO	
-X10	2 X 5	.4980/12.649	WWWWW-10	NO	
-X12	2 X 6	.5980/15.189	WWWWW-12	NO	
-X14	2 X 7	.6980/17.729	WWWWW-14	NO	
-X16	2 X 8	.7980/20.269	WWWWW-16	NO	
-X18	2 X 9	.8980/22.809	WWWWW-18	YES	
69145-X20	2 X 10	.9980/25.349	WWWWW-20	NO	
				1-2 9-10 17-18	



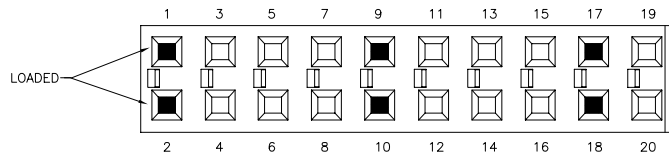
NOTE 4

PLATINGS;

- 1XX 15u"/.38u Au CONTACT AREA
- 2XX 30u"/.76u Au CONTACT AREA
- 3XXLF 100u"/2.54u Sn CONTACT AREA
- 4XX Au-FLASH-OVER-50u"-Ni-CONTACT-AREA- OBSOLETE
- 5XX SELECT LOADING (30u"/.76u Au CONTACT AREA)

NOTES:

- ① MATERIAL' POLYESTER. FLAME RETARDENT PER UL-94-V0. COLOR - BLACK
2. RECOMMENDED APPLICATION DATA'
 - A. ALL MATING PINS TO BE .025/64 SQ. ON TRUE CENTER OF GIVEN TERMINAL SPACING WITHIN .015/.38 DIA.
 - B. SUGGESTED MATING PIN LENGTH .160/4.06 MIN.
- 3 DASH 5XX SELECT LOADED WITH 30u" GOLD CONTACTS.
4. .005/0.13 RECESS PERMISSABLE AT THIS LOCATION FOR ASSEMBLY PROCESSING.
- ⑤ ADD "LF" SUFFIX AT THE END OF PART NUMBER FOR LEAD FREE OPTION.
- ⑥ THIS PRODUCT MEETS EUROPEAN UNION DIRECTIVES AND OTHER COUNTRY REGULATION AS DESCRIBED IN GS-22-008.
7. THIS PRODUCT IS NOT INTENDED TO BE EXPOSED TO A MANUFACTURING SOLDER PROCESS.



LOADED POSITIONS
PIN ENTRANCE
(BOTTOM)

mat'l. code		surface ISO 1302 ✓		tolerance ISO 406 ISO 1101		projection ⊕		product family JUMPER	
ltr	ecn	no	dr	date		tolerances unless otherwise specified		title	
M						angles	linear	INCH/MM	
						0°±2'	.XX±.01/.3 .XXX±.005/.13 .XXXX±.0020/.051	scale 20:1	
			dr	S. RAMP	2/18/91	FCJ		dwg no	
			enr	M.HAHN	2/18/91			sheet 2 of 2	
			chr	M.HAHN	2/18/91			size 69145 A3	
			appd	M.HAHN	2/18/91			type Product Customer Drawing	
sheet index	revision sheet								