

IEC Appliance Connector C14 with modular extended Components

Plug removal necessary for fuse replacement



6421.005X.XX
Appliance inlet
Appliance outlet



6431.005X.XX
Appliance inlet
Switch
Appliance outlet



6432.0X5X.XX
Appliance inlet
Fuseholder
Switch
Appliance outlet

C14



70° C

**Description**

- Panel Mount:
Snap-in version from front side
- 2 - 4 Functions:
Appliance Inlet Protection class I, Connector Protection class I, Line switch 2-pole, Fuseholder for fuse-links 5 x 20 mm 1- or 2-pole
- Solder terminals 3.5 x 0.8 mm or quick connect terminals 6.3 x 0.8 mm
- Alternative: version with line filter [Felcom 54](#)

Approvals

- VDE License Number: 108162
- UL License Number: E103791
- CSA License Number: 38456

Characteristics

- Modular component selection
- Individual components soldered on a printed circuit board
- Plug removal necessary for fuse-link replacement
Fuse drawer meets requirements of medical standard IEC/EN 60601-1
The fuseholder is accessible from the equipment front
- Fully insulated from the rear
- Qualified for use in equipment according IEC/EN 60950

Other versions on request

- Line switch with other rocker marking

Weblinks

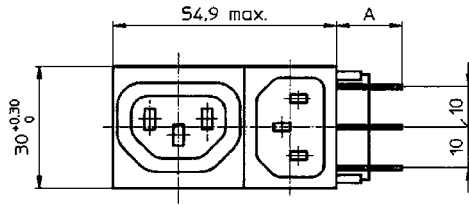
[Approvals](#), [RoHS](#), [CHINA-RoHS](#), [e-Store](#), [SCHURTER-Stock-Check](#), [Distributor-Stock-Check](#)

Technical Data

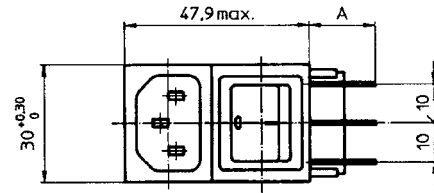
Ratings IEC	10A / 250VAC; 50Hz
Ratings UL/CSA	10A / 125/250VAC; 60Hz
Allowable Operation Temp.	-25 °C to 70 °C
Protection Class	Suitable for appliances with protection class I acc. to IEC 61140
Terminal	Solder terminals 3.5 x 0.8 mm or quick connect terminals 6.3 x 0.8 mm, tin-plated
Panel Thickness s	Snap-in: 1/ 1.2/ 1.5/ 2/ 2.5/ 3 mm
Material: Housing	Thermoplastic, black, UL 94V-0

Appliance-Inlet/-Outlet	C14 acc. to IEC/EN 60320-1 and F acc. to IEC/EN 60320-2-2, UL 498, CSA C22.2 no. 42 (for cold conditions) pin-temperature 70 °C, 10A, Protection class I
Fuseholder	1 or 2 pole, Shocksafe category PC2 acc. to IEC 60127-6, for fuse-links 5 x 20mm
Rated Power Acceptance @ Ta 23 °C	5 x 20: 2W (1 pole)/ 1.6W (2-pole) per pole
Power Acceptance @ Ta > 23°C	Admissible power acceptance at higher ambient temperature see derating curves
Line Switch	Rocker switch 2-pole, non-illuminated, IEC 61058-1 Technical details

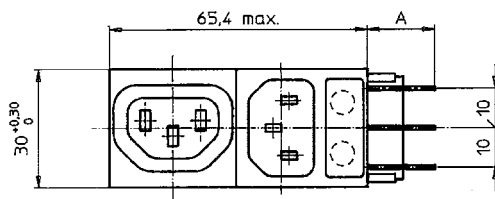
Dimensions



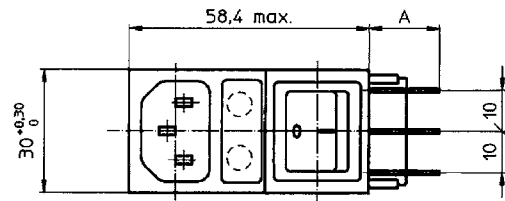
Variants 6421.005X.XX
Mounting hole: 53.6+0,2 x 27.6+0,2



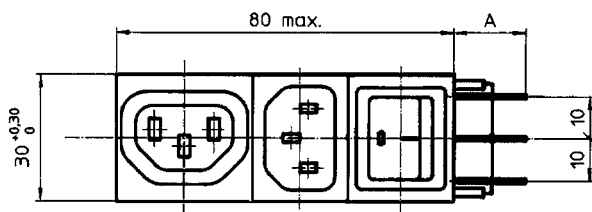
Variants 6422.005X.XX
Mounting hole: 46.7+0,2 x 27.6+0,2



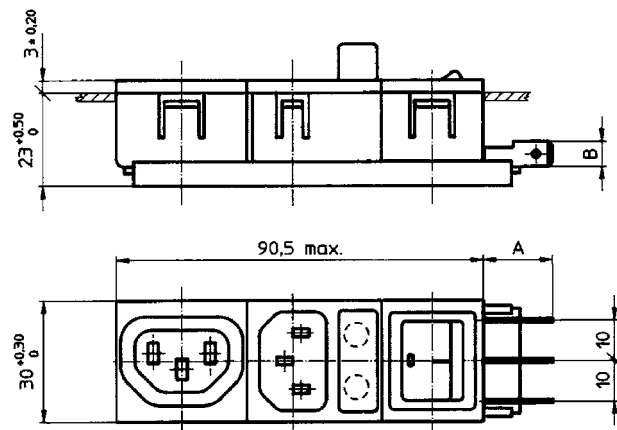
Variants 6423.0X5X.XX
Mounting hole: 65.5+0,2 x 27.6+0,2



Variants 6424.0X5X.XX
Mounting hole: 57+0,2 x 27.6+0,2



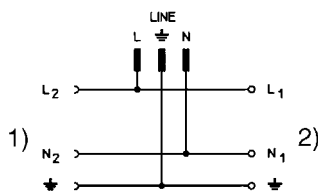
Variants 6431.005X.XX
Mounting hole: 80.1+0,2 x 27.6+0,2



Variants 6432.0X5X.XX
Mounting hole: 90.6+0,2 x 27.6+0,2

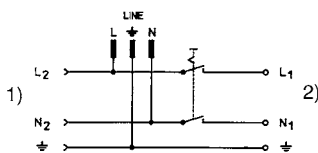
Diagrams

6421



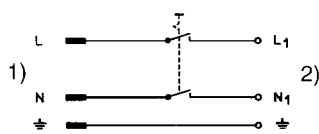
- 1) Load 2
- 2) Load 1

6431



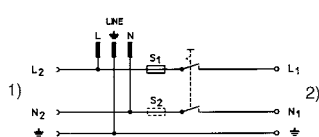
- 1) Load 2
- 2) Load 1

6422



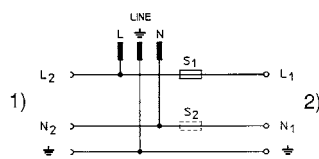
- 1) Line
- 2) Load 1

6432



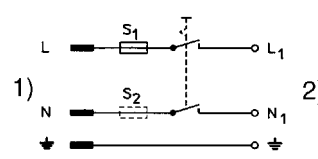
- 1) Load 2
- 2) Load 1

6423



- 1) Load 2
- 2) Load 1

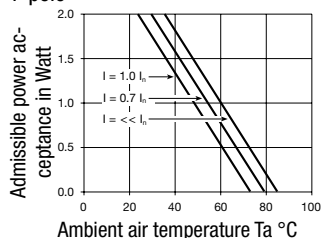
6424



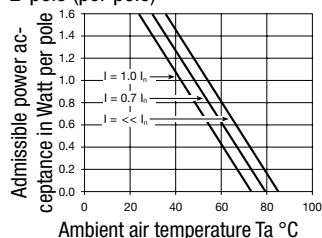
- 1) Line
- 2) Load 1

Derating Curves

1-pole



2-pole (per pole)



Ordering instructions

64 XX.0X5X.XX

“Snap-in” panel thickness

10 = 1,0 mm

12 = 1,2 mm

15 = 1,5 mm

20 = 2,0 mm

25 = 2,5 mm

30 = 3,0 mm

Connection

51 = solder terminals 3,5 x 0,8 mm

53 = quick connect terminals 6,3 x 0,8 mm

Fuseholder 5 x 20 mm

00 = without fuseholder

01 = 1-pole

02 = 2-pole

Module combination

21 = Appliance inlet, outlet

22 = Appliance inlet, switch

23 = Appliance inlet, fuseholder, outlet

24 = Appliance inlet, fuseholder, switch

31 = Appliance inlet, outlet, switch

32 = Appliance inlet, fuseholder, outlet, switch

Base model

Packaging unit

10 Pcs

Accessory

Description



Cord retaining kits

Cord retaining strain relieve

Flat head, A	4700.0001
Flat head, E	4700.0005
Flat head, G	4700.0007

Mating Inlets/Plugs

Category / Description

Interconnection Cord



Power Cord with IEC Appliance Plug E, angled, 70°C	0607
Power Cord with IEC Appliance Plug E, angled, 70°C	0608
Power Cord with IEC Appliance Plug E, straight, 70°C	0609
Power Cord with IEC Appliance Plug G, angled, 70°C	607B
Power Cord with IEC Appliance Plug G, angled, 70°C	608B
Power Cord with IEC Appliance Plug G, straight, 70°C	609B

Plug Connector



IEC plug connector E, rewirable, straight, max. cable diameter 8.5 mm	4732
IEC plug connector E, rewirable, angled, max. cable diameter 10 mm	4733
IEC plug connector E, rewirable, straight, max. cable diameter 10 mm	4735
IEC plug connector E, rewirable, angled, max. cable diameter 10 mm	4736
IEC plug connector E, rewirable, straight	9009
IEC plug connector E, rewirable, angled	9013
IEC plug connector E, rewirable, angled	P685

Mating Outlets/Connectors

Appliance Outlet



IEC appliance outlet F, screw-on mounting, front side, solder /quick connect terminal	4787
IEC appliance outlet F, screw-on mounting, front side, solder /quick connect terminal	4788
IEC appliance outlet F oder H, screw-on mounting, front side, solder/PCB/quick connect terminal	5091
IEC appliance outlet F oder H, screw-on mounting, front side, solder/quick connect terminal	5092

Connector



IEC cord connector C15, rewirable, straight	0101
IEC cord connector C15A, rewirable, straight	0102
IEC cord connector C15A, rewirable, straight	0102-G
IEC cord connector C15A, rewirable, angled	0112
IEC cord connector C13, rewirable, angled	4012
IEC cord connector C13, rewirable, angled	4013
IEC cord connector C13, rewirable, straight	4020
IEC cord connector C13, rewirable, straight	4021
IEC cord connector C13, rewirable, straight	4022
IEC cord connector C13, rewirable, angled	4300-06

...

Category / Description

Power Supply or Interconnection Cord



Power Cord with IEC Appliance Connector C13, angled, 70°C	0311
Power Cord with IEC Appliance Connector C13, angled, 70°C	3011
Power Cord with IEC Appliance Connector C13, angled, 70°C	3012
Power Cord with IEC Appliance Connector C13, angled, 70°C	3013
Power Cord with IEC Appliance Connector C13, 70°C	3020
Power Cord with IEC Appliance Connector C13, straight, 70°C	3027
Power Cord with IEC Appliance Connector C13, straight, 70°C	302U
Power Cord with IEC Appliance Connector C13, straight, 70°C	3030
Power Cord with IEC Appliance Connector C13, angled, 70°C	311L
Power Cord with IEC Appliance Connector C13, angled, 70°C	312L
	...