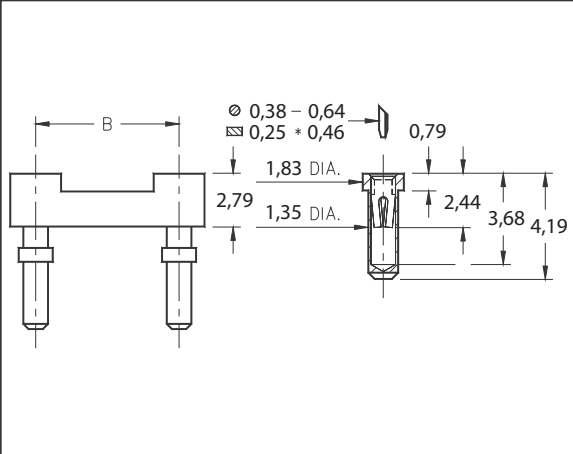
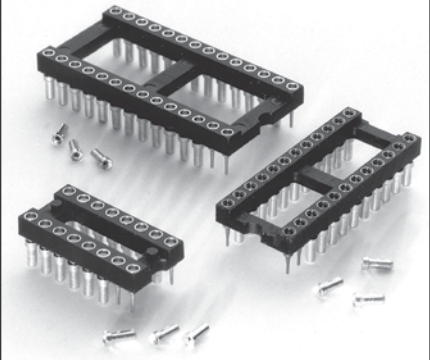


Carrier Type Low Profile



- Convenient way to load loose receptacles on a PC board. See page 32 for application details.
- Removable plastic carriers can be returned for reloading.
- Hi-Rel, 4-finger BeCu #30 contact is rated at 3 amps. See page 208 for details.
- Series 614 use MM #1401 pins. See page 139 for details.
- Insulators are high temperature thermoplastic.



| | | | | | |
|----------------------|---|---|---|-------------------|-------------------------------|
| Total number of pins | | | | Quantity per tube | <h3>Ordering Information</h3> |
| | A | B | C | | |
| | | | | | |

| | | | | | | |
|----|------|-------|------|-----|----------------------|--|
| 10 | 12,6 | 5,08 | 7,6 | 40 | 614-XX-210-41-001000 | |
| 4 | 5,0 | 7,62 | 10,1 | 102 | 614-XX-304-41-001000 | |
| 6 | 7,6 | 7,62 | 10,1 | 67 | 614-XX-306-41-001000 | |
| 8 | 10,1 | 7,62 | 10,1 | 50 | 614-XX-308-41-001000 | |
| 10 | 12,6 | 7,62 | 10,1 | 40 | 614-XX-310-41-001000 | |
| 14 | 17,7 | 7,62 | 10,1 | 28 | 614-XX-314-41-001000 | |
| 16 | 20,3 | 7,62 | 10,1 | 25 | 614-XX-316-41-001000 | |
| 18 | 22,8 | 7,62 | 10,1 | 22 | 614-XX-318-41-001000 | |
| 20 | 25,3 | 7,62 | 10,1 | 20 | 614-XX-320-41-001000 | |
| 22 | 27,8 | 7,62 | 10,1 | 18 | 614-XX-322-41-001000 | |
| 24 | 30,4 | 7,62 | 10,1 | 16 | 614-XX-324-41-001000 | |
| 28 | 35,5 | 7,62 | 10,1 | 14 | 614-XX-328-41-001000 | |
| 20 | 25,4 | 10,16 | 12,7 | 20 | 614-XX-420-41-001000 | |
| 22 | 27,8 | 10,16 | 12,7 | 18 | 614-XX-422-41-001000 | |
| 24 | 30,4 | 10,16 | 12,7 | 16 | 614-XX-424-41-001000 | |
| 28 | 35,5 | 10,16 | 12,7 | 14 | 614-XX-428-41-001000 | |
| 32 | 40,6 | 10,16 | 12,7 | 12 | 614-XX-432-41-001000 | |
| 24 | 30,5 | 15,24 | 17,7 | 16 | 614-XX-624-41-001000 | |
| 28 | 35,5 | 15,24 | 17,7 | 14 | 614-XX-628-41-001000 | |
| 32 | 40,6 | 15,24 | 17,7 | 12 | 614-XX-632-41-001000 | |
| 36 | 45,7 | 15,24 | 17,7 | 11 | 614-XX-636-41-001000 | |
| 40 | 50,8 | 15,24 | 17,7 | 10 | 614-XX-640-41-001000 | |
| 42 | 53,3 | 15,24 | 17,7 | 9 | 614-XX-642-41-001000 | |
| 48 | 60,9 | 15,24 | 17,7 | 8 | 614-XX-648-41-001000 | |
| 50 | 63,5 | 15,24 | 17,7 | 8 | 614-XX-650-41-001000 | |
| 52 | 66,0 | 15,24 | 17,7 | 7 | 614-XX-652-41-001000 | |
| 50 | 63,5 | 22,86 | 25,3 | 8 | 614-XX-950-41-001000 | |
| 52 | 66,0 | 22,86 | 25,3 | 7 | 614-XX-952-41-001000 | |
| 64 | 81,2 | 22,86 | 25,3 | 6 | 614-XX-964-41-001000 | |
| | | | | | | |

XX= Plating Code See Below

| | | | | | | | | | |
|--------------------------|--|--|--|--|--------------|--|--|-----------|--|
| SPECIFY PLATING CODE XX= | | | | | 93 | | | 43 ◇ | |
| Sleeve (Pin) | | | | | 5,08µm Sn/Pb | | | 5,08µm Sn | |
| Contact (Clip) | | | | | 0,76µm Au | | | 0,76µm Au | |