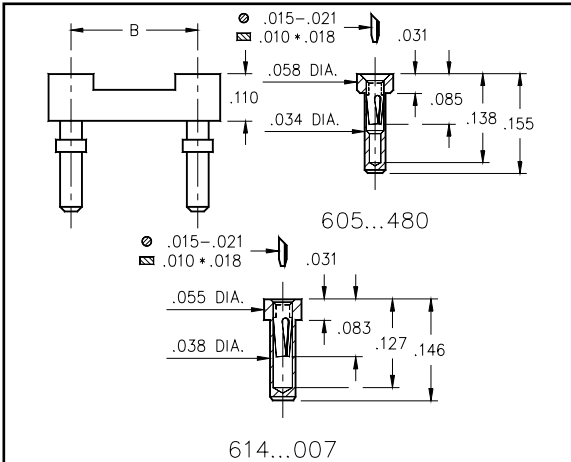
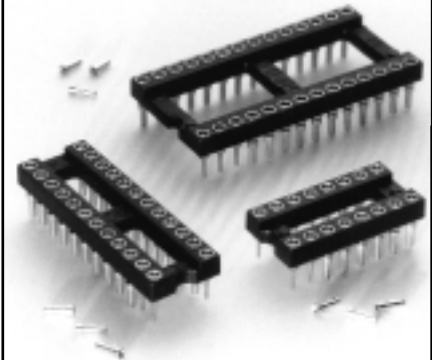


Carrier Type Low Profile



- Low profile receptacles sit only .031" high above the board.
- Removable plastic carriers can be returned for reloading.
- Hi-Rel, 3-finger #11 BeCu contact is rated at 3 amps. See page 206 for details.
- Uses M-M#1407 & 0548 receptacles. See page 126 for details.



| Total number of pins | | | | Quantity per tube | Ordering Information | | | | |
|--------------------------|-----|-----|-----|-------------------|---------------------------|---------------------------|--|-------------|-------------|
| | A | B | C | | Length = .146 | Length = .155 | | | |
| | | | | | (.039 Min. Mounting Hole) | (.035 Min. Mounting Hole) | | | |
| 10 | 0.5 | 0.2 | 0.3 | 40 | 614-XX-210-31-007 | 605-XX-210-11-480 | <div style="border: 1px solid black; border-radius: 50%; padding: 10px; text-align: center;"> XX= Plating Code See Below </div> | | |
| 4 | 0.2 | 0.3 | 0.4 | 102 | 614-XX-304-31-007 | 605-XX-304-11-480 | | | |
| 6 | 0.3 | 0.3 | 0.4 | 67 | 614-XX-306-31-007 | 605-XX-306-11-480 | | | |
| 8 | 0.4 | 0.3 | 0.4 | 50 | 614-XX-308-31-007 | 605-XX-308-11-480 | | | |
| 10 | 0.5 | 0.3 | 0.4 | 40 | 614-XX-310-31-007 | 605-XX-310-11-480 | | | |
| 14 | 0.7 | 0.3 | 0.4 | 28 | 614-XX-314-31-007 | 605-XX-314-11-480 | | | |
| 16 | 0.8 | 0.3 | 0.4 | 25 | 614-XX-316-31-007 | 605-XX-316-11-480 | | | |
| 18 | 0.9 | 0.3 | 0.4 | 22 | 614-XX-318-31-007 | 605-XX-318-11-480 | | | |
| 20 | 1.0 | 0.3 | 0.4 | 20 | 614-XX-320-31-007 | 605-XX-320-11-480 | | | |
| 22 | 1.1 | 0.3 | 0.4 | 18 | 614-XX-322-31-007 | 605-XX-322-11-480 | | | |
| 24 | 1.2 | 0.3 | 0.4 | 16 | 614-XX-324-31-007 | 605-XX-324-11-480 | | | |
| 28 | 1.4 | 0.3 | 0.4 | 14 | 614-XX-328-31-007 | 605-XX-328-11-480 | | | |
| 20 | 1.0 | 0.4 | 0.5 | 20 | 614-XX-420-31-007 | 605-XX-420-11-480 | | | |
| 22 | 1.1 | 0.4 | 0.5 | 18 | 614-XX-422-31-007 | 605-XX-422-11-480 | | | |
| 24 | 1.2 | 0.4 | 0.5 | 16 | 614-XX-424-31-007 | 605-XX-424-11-480 | | | |
| 28 | 1.4 | 0.4 | 0.5 | 14 | 614-XX-428-31-007 | 605-XX-428-11-480 | | | |
| 32 | 1.6 | 0.4 | 0.5 | 12 | 614-XX-432-31-007 | 605-XX-432-11-480 | | | |
| 24 | 1.2 | 0.6 | 0.7 | 16 | 614-XX-624-31-007 | 605-XX-624-11-480 | | | |
| 28 | 1.4 | 0.6 | 0.7 | 14 | 614-XX-628-31-007 | 605-XX-628-11-480 | | | |
| 32 | 1.6 | 0.6 | 0.7 | 12 | 614-XX-632-31-007 | 605-XX-632-11-480 | | | |
| 36 | 1.8 | 0.6 | 0.7 | 11 | 614-XX-636-31-007 | 605-XX-636-11-480 | | | |
| 40 | 2.0 | 0.6 | 0.7 | 10 | 614-XX-640-31-007 | 605-XX-640-11-480 | | | |
| 42 | 2.1 | 0.6 | 0.7 | 9 | 614-XX-642-31-007 | 605-XX-642-11-480 | | | |
| 48 | 2.4 | 0.6 | 0.7 | 8 | 614-XX-648-31-007 | 605-XX-648-11-480 | | | |
| 50 | 2.5 | 0.6 | 0.7 | 8 | 614-XX-650-31-007 | 605-XX-650-11-480 | | | |
| 52 | 2.6 | 0.6 | 0.7 | 7 | 614-XX-652-31-007 | 605-XX-652-11-480 | | | |
| 50 | 2.5 | 0.9 | 1.0 | 8 | 614-XX-950-31-007 | 605-XX-950-11-480 | | | |
| 52 | 2.6 | 0.9 | 1.0 | 7 | 614-XX-952-31-007 | 605-XX-952-11-480 | | | |
| 64 | 3.2 | 0.9 | 1.0 | 6 | 614-XX-964-31-007 | 605-XX-964-11-480 | | | |
| SPECIFY PLATING CODE XX= | | | | | | | | 93 | 99 |
| Sleeve (Pin) | | | | | | | | 200μ" Sn/Pb | 200μ" Sn/Pb |
| Contact (Clip) | | | | | | | | 30μ" Au | 200μ" Sn/Pb |