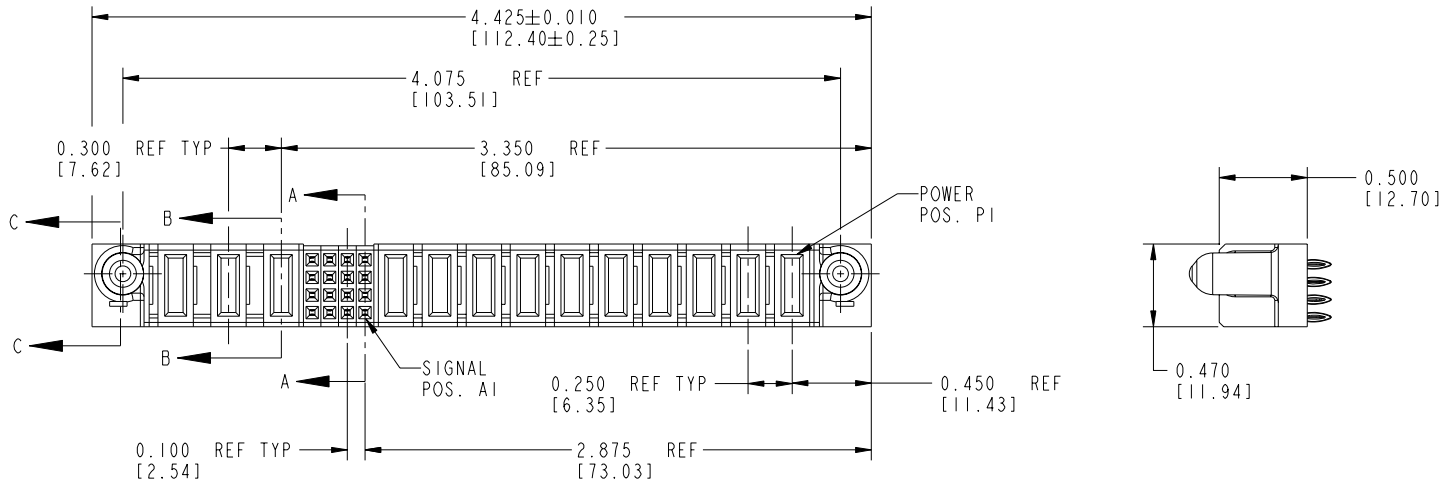


Tous droits strictement réservés. Reproduction ou communication à des tiers interdite sous quelque forme que ce soit sans autorisation écrite du propriétaire. Propriété de c FCI. Droits de reproduction FCI.

All rights strictly reserved. Reproduction or issue to third parties in any form whatever is not permitted without written authority from the proprietor. Property of FCI. Copyright FCI.

PRODUCT No.	ROWS	POWER				SIGNAL				POWER								E1		
		E2	P13	P12	P11	4	3	2	1	P10	P9	P8	P7	P6	P5	P4	P3		P2	P1
51940-002-- NOTE: ②	D C B A																			



A
FCI

CODE	DIM "M" MATING LENGTH	DIM "T" TAIL LENGTH	CONTACT TYPE
F	N/A [N/A]	0.135 [3.43]	SIGNAL
PC	0.042 [1.07]	0.135 [3.43]	POWER
PF	0.092 [2.34]	0.135 [3.43]	POWER

mat'l code				SEE NOTES		tolerances unless otherwise specified		CUSTOMER	
ltr	ecn no.	dr	date	linear	.xx±.01/0.X±0.3	COPY		A FCI www.fciconnect.com	
A	V12512	JWS	10/23/01	angles	.xxx±.005/0.xx±0.13	projection		title 10P + 16S + 3ACP VERTICAL PRESSFIT RECEPTACLE	
B	DG05-0232	SJ	07/20/05	dr	.xxx±.0020/.xxx±.051	INCH/MM		product family PwrBlade code 213	
				enr	0°±2°	scale 1:1		size dwg no 51940-002 sheet 1 of 3	
				chr					
				appd					
sheet index	revision sheet	B 1	B 2						

CONFIDENTIAL

A
FCI

A

B

B

Pro/E

cage code 22526

PDM: Rev:B

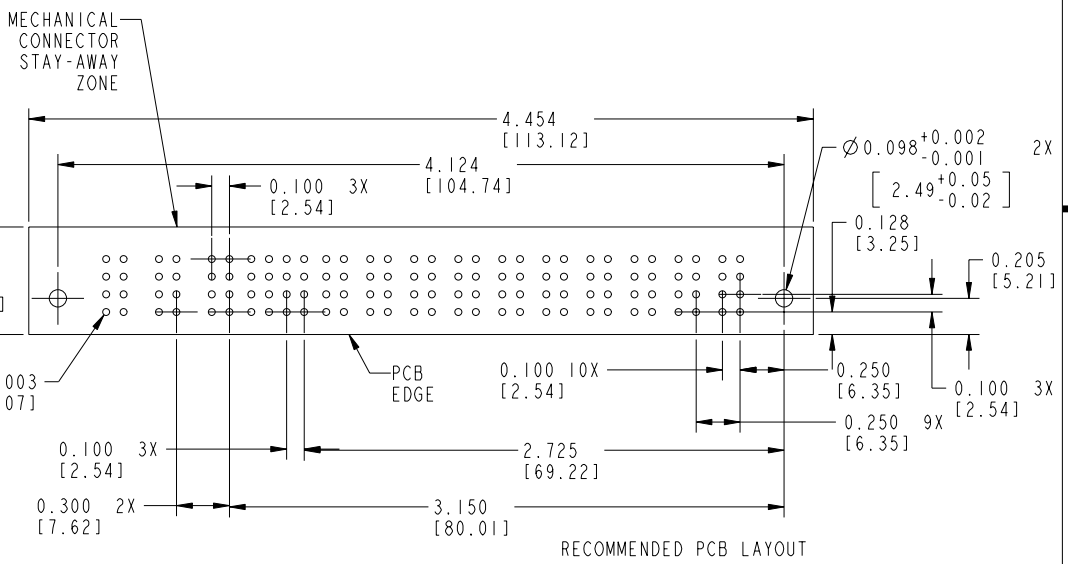
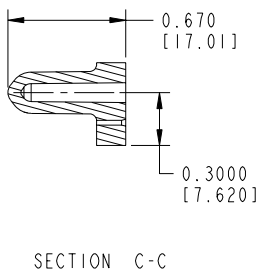
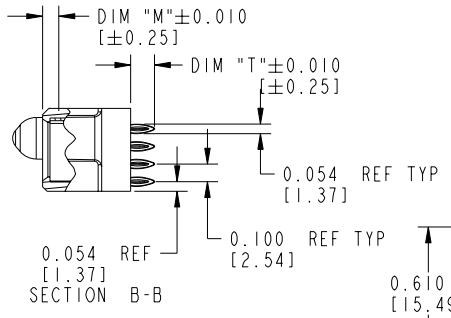
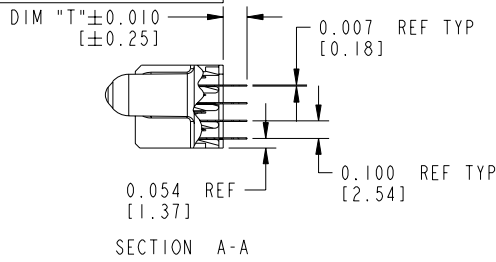
STATUS: Released

Printed: Aug 14, 2007

Tous droits strictement réservés. Reproduction ou communication a des tiers interdite sous quelque forme que ce soit sans autorisation écrite du propriétaire. Propriété de c FCI. Droits de reproduction FCI.

All rights strictly reserved. Reproduction or issue to third parties in any form whatever is not permitted without written authority from the proprietor. Property of FCI. Copyright FCI.

PRODUCT NUMBER
51940-002--
NOTE: (2)



mat'l code		SEE NOTES		tolerances unless otherwise specified		CUSTOMER		 www.fciconnect.com	
ltr	ecn no.	dr	date	linear	.XX±.01/0.X±0.3	COPY		projection	title
A				angles	.XXX±.005/0.XX±0.13	INCH/MM			10P + 16S + 3ACP VERTICAL PRESSFIT RECEPTACLE
				dr	.XXX±.0020/.XXX±.051	scale		product family	PwrBlade
				enrg	0°±2°	1:1		size	code
				chr	J. SHAFFER 10/23/01			A	213
				appd	J. ALLISON 10/23/01			51940-002	sheet
					J. ALLISON 10/23/01				2
sheet index	revision sheet								

cage code 22526 4

Tous droits strictement réservés. Reproduction ou communication à des tiers interdite sous quelque forme que ce soit sans autorisation écrite du propriétaire. Propriété de c FCI. Droits de reproduction FCI.

All rights strictly reserved. Reproduction or issue to third parties in any form whatever is not permitted without written authority from the proprietor. Property of FCI. Copyright FCI.

PRODUCT NUMBER
51940-002_--
NOTE: ②

CONNECTOR NOTES:

- ① HOUSING MATERIAL: UL 94 V-0 GLASS FILLED HIGH TEMP THERMOPLASTIC
POWER CONTACT MATERIAL: COPPER ALLOY
SIGNAL CONTACT MATERIAL: COPPER ALLOY
- 2. PLATING:

51940-002 Singal Pin:30u"/0.76um Au OVER 50u"/1.27um Ni ON THE CONTACT AREA,
AND 100u"/2.54um SnPb PLATING OVER 50u"/1.27um Ni ON THE TERMINATION SECTION.
Power Pin:30u"/0.76um Au OVER 50u"/1.27um Ni ON THE CONTACT AREA,
AND 100u"/2.54um SnPb PLATING OVER 50u"/1.27um Ni ON THE TERMINATION SECTION.

51940-002LF Singal Pin:30u"/0.76um Au OVER 50u"/1.27um Ni ON THE CONTACT AREA,
AND 78u"/2.00um Sn PLATING OVER 50u"/1.27um Ni ON THE TERMINATION SECTION.
Power Pin:30u"/0.76um Au OVER 50u"/1.27um Ni ON THE CONTACT AREA,
AND 78u"/2.00um Sn PLATING OVER 50u"/1.27um Ni ON THE TERMINATION SECTION.

PART NUMBER 51940-002LF MEETS EUROPEAN UNION DIRECTIVE AND OTHER COUNTRY REGULATIONS AS DESCRIBED IN GS-22-008.




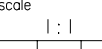
THE HOUSING WILL WITHSTAND EXPOSURE TO 260° PEAK TEMPERATURE FOR 10 SECONDS IN A WAVE SOLDER APPLICATION WITH A CIRCUIT BOARD.

- 3. "MANUFACTURER" NAME, P/N, AND DATE CODE TO APPEAR ON THIS SURFACE
- 4. PRODUCT SPECIFICATION GS-12-149

PCB NOTES:

- 5. ALL DIMENSIONS ARE BASIC UNLESS OTHERWISE SPECIFIED.
- 6. ALL THROUGH HOLES ARE LOCATED WITH A TRUE POSITION OF 0.004 [0.10]
- 7. ALL HOLE DIAMETERS ARE FINISHED HOLE SIZE
- 8. Ø0.098[2.49] THROUGH HOLES ARE UNPLATED.
- 9. Ø0.0453±0.0010 [1.151±0.025] DRILLED HOLES PLATED WITH 0.0003 [0.008] MIN SnPb OVER 0.001 [0.03] TO 0.003 [0.08] Cu PLATING TO ACHIEVE A Ø0.040±0.003 [1.02±0.07] HOLE.

CONFIDENTIAL

mat'l code		SEE NOTES		tolerances unless otherwise specified		CUSTOMER		 www.fciconnect.com	
ltr	ecn no.	dr	date	linear	.XX±.01/0.X±0.3	COPY			
B				projection	.XXX±.005/0.XX±0.13	 title 10P + 16S + 3ACP VERTICAL PRESSFIT RECEPTACLE			
				angles	.XXX±.0020/.XX±.051	 product family PwrBlade code 213			
				dr	0°±2°	 size dwg no 51940-002 sheet 3			
				engr	J. SHAFFER 10/23/01	INCH/MM A			
				chr	J. ALLISON 10/23/01	scale 1:1			
				appd	J. ALLISON 10/23/01				
sheet index	revision sheet								

cage code 22526 4

Pro/E

PDM: Rev:B

STATUS: Released

Printed: Aug 14, 2007