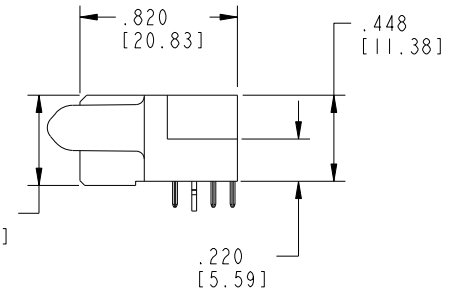
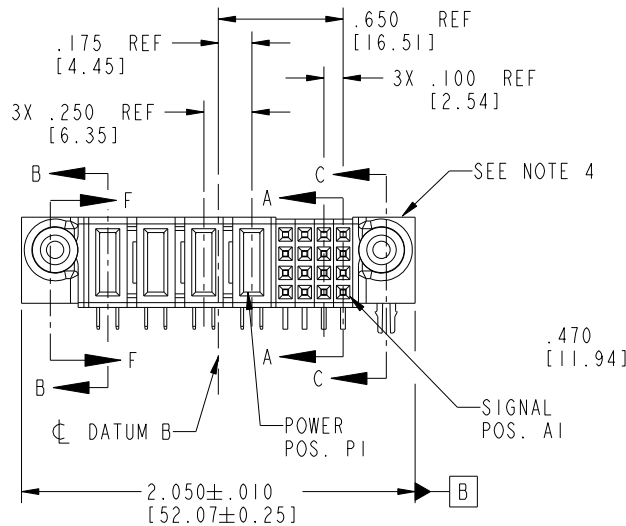
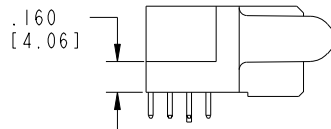
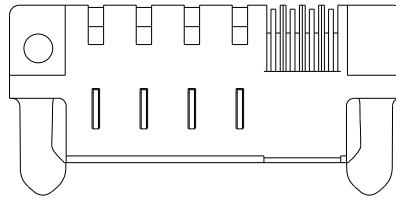


Tous droits strictement réservés. Reproduction ou communication a des tiers interdite sous quelque forme que ce soit sans autorisation écrite du propriétaire. Propriété de c FCI. Droits de reproduction FCI.



All rights strictly reserved. Reproduction or issue to third parties in any form whatever is not permitted without written authority from the proprietor. Property of FCI. Copyright FCI.

PRODUCT NO. 51771-003_- Note: ③	ROWS D C B A	POWER				SIGNAL				E1
		E2	P4	P3	P2	P1	4	3	2	
		PA	PA	PA	PA	H	H	H	H	
						G	G	G	G	
						F	F	F	F	
						E	E	E	E	



CODE	DIM "M" MATING LENGTH	CONTACT TYPE
E	N/A [N/A]	SIGNAL
F	N/A [N/A]	SIGNAL
G	N/A [N/A]	SIGNAL
H	N/A [N/A]	SIGNAL
PA	.042 [1.07]	POWER
HA	N/A [N/A]	HOLD-DOWN

mat'l code SEE NOTE 2				tolerances unless otherwise specified		CUSTOMER		 www.fciconnect.com	
ltr	ecn no.	dr	date	linear	.XX±.01/0.X±0.3	COPY		title	
A	V21787	TAB	11/15/02		.XX±.005/0.XX±0.13	projection		16S + 4P	
B	DG05-0123	SJ	06/03/05	angles	.XXX±.0020/0.XXX±0.051			R/A SOLDER RECEPTACLE	
C	DG08-0251	W D	09/15/08		0°±2°	INCH/MM		product family	
				dr	T. BRUNGARD 11/15/02	scale		PwrBlade	
				engr	M. MOSTOLLER 11/15/02	1:1		code	
				chr	M. MOSTOLLER 11/15/02			213	
				appd	M. MOSTOLLER 11/15/02			sheet	
sheet index	revision sheet	C 1	C 2	C 3	C 4			1 of 4	
								A 51771-003	

Pro/E

PDM: Rev: C

STATUS: Released

Printed: Sep 21, 2008

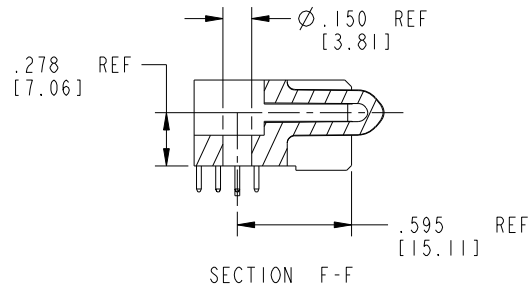
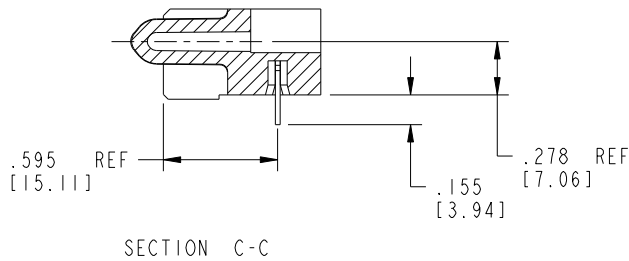
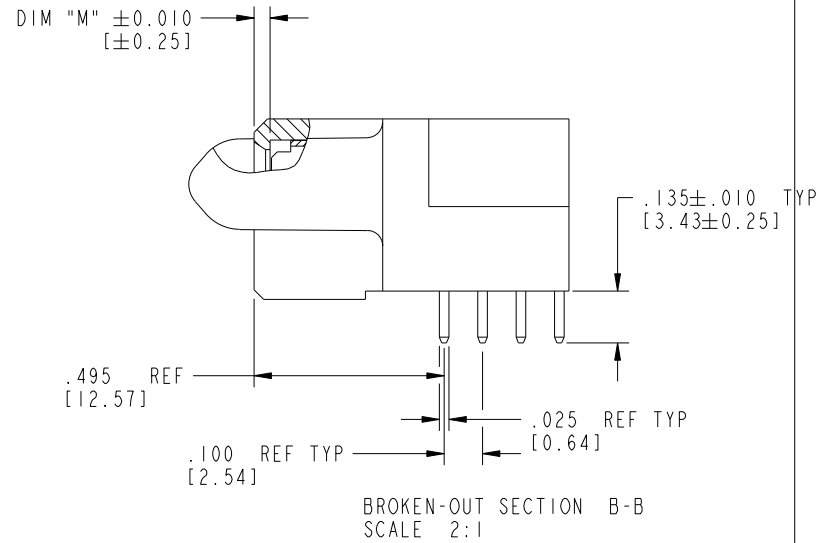
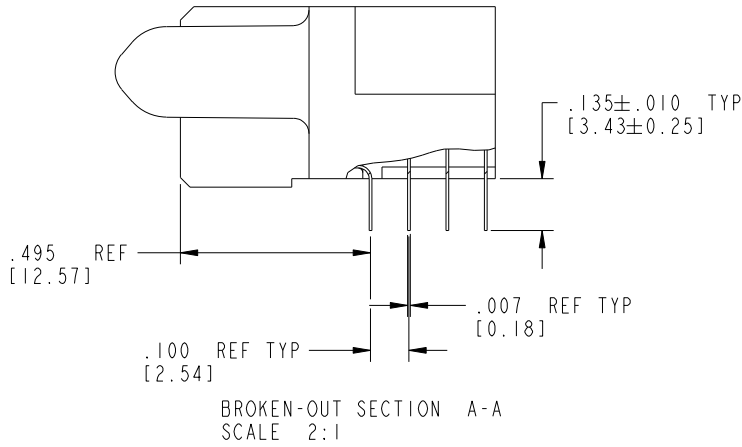
cage code 28556

Tous droits strictement réservés. Reproduction ou communication a des tiers interdite sous quelque forme que ce soit sans autorisation écrite du propriétaire. Propriété de c FCI. Droits de reproduction FCI.

All rights strictly reserved. Reproduction or issue to third parties in any form whatever is not permitted without written authority from the proprietor. Property of FCI. Copyright FCI.



PRODUCT NUMBER
51771-003--
Note: ③



mat'l code		SEE NOTE 2		tolerances unless otherwise specified		CUSTOMER		 www.fciconnect.com	
ltr	ecn no.	dr	date	linear	.XX±.01/0.X±0.3	projection	title		
C					.XXY±.005/0.XX±0.13		16S + 4P		
				angles	.XXX±.0020/0.XXX±0.051		R/A SOLDER RECEPTACLE		
				dr	T. BRUNGARD 11/15/02	INCH/MM	product family		code
				engr	M. MOSTOLLER 11/15/02	scale	PwrBlade		213
				chr	M. MOSTOLLER 11/15/02	1:1	size	dwg no	sheet
				appd	M. MOSTOLLER 11/15/02		A	51771-003	2 of 4
sheet index	revision sheet								

Pro/E

PDM: Rev: C

STATUS: Released

Printed: Sep 21, 2008

Tous droits strictement réservés. Reproduction ou communication a des tiers interdite sous quelque forme que ce soit sans autorisation écrite du propriétaire. Propriété de c FCI. Droits de reproduction FCI.

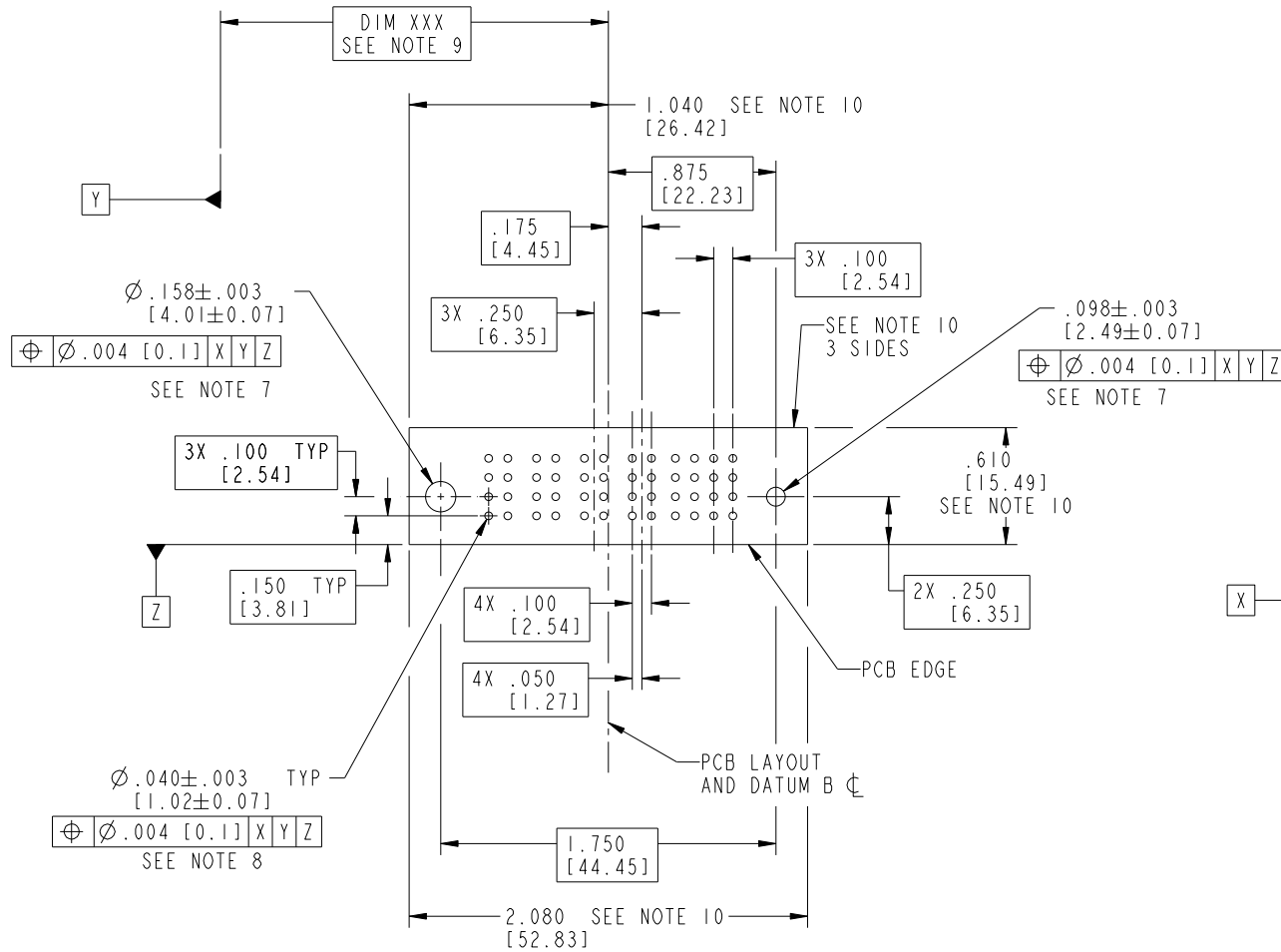
All rights strictly reserved. Reproduction or issue to third parties in any form whatever is not permitted without written authority from the proprietor. Property of FCI. Copyright FCI.



PRODUCT NUMBER

51771-003--

Note: ③



RECOMMENDED PCB LAYOUT

mat'l code		SEE NOTE 2		tolerances unless otherwise specified		CUSTOMER		 www.fciconnect.com	
ltr	ecn no.	dr	date	linear	.XX±.01/0.X±0.3	projection	title		
C				angles	.XX±.005/0.XX±0.13		16S + 4P		
				dr	.XXX±.0020/0.XXX±0.051	INCH/MM	R/A SOLDER RECEPTACLE		
				enr	0°±2°	scale	product family	PwrBlade	code
				chr	T. BRUNGARD 11/15/02	1:1	size	dwg no	213
				appd	M. MOSTOLLER 11/15/02		A	51771-003	sheet
sheet index	revision sheet				M. MOSTOLLER 11/15/02				3 of 4

Pro/E

PDM: Rev: C

STATUS: Released

Printed: Sep 21, 2008

cage code 28556

PRODUCT NUMBER

51771-003--
Note: ③

NOTES:

1. DIMENSIONS AND TOLERANCES ARE IN ACCORDANCE WITH ASME Y14.5M, 1994 UNLESS OTHERWISE SPECIFIED.

CONNECTOR NOTES:

2. HOUSING MATERIAL: UL 94 V-0 GLASS FILLED HIGH-TEMP THERMOPLASTIC
POWER CONTACT MATERIAL: COPPER ALLOY
SIGNAL PIN MATERIAL: COPPER ALLOY

③ 3. SEE ITEM 5 & 6 IN PRINT 10064183 FOR PLATING SPEC OF 51771-003 AND 51771-003LF RESPECTIVELY.

4. MANUFACTURER'S NAME, P/N, AND DATE CODE TO APPEAR ON THIS SURFACE.

5. PRODUCT SPECIFICATION GS-12-149.
APPLICATION SPECIFICATION BUS-20-067.

PCB NOTES:

6. ALL HOLE DIAMETERS ARE FINISHED HOLE SIZE.

7. MOUNTING HOLES, WHERE APPLICABLE, ARE UNPLATED.

8. $\varnothing .0453 \pm .0010$ [1.151 \pm 0.025] DRILLED HOLES PLATED WITH .0003 [0.008] MIN SnPb OVER .001 [0.03] TO .003 [0.08] Cu PLATING TO ACHIEVE $\varnothing .040 \pm .003$ [1.02 \pm .07] HOLE.

9. "DIM XXX" TO BE DETERMINED BY THE CUSTOMER.

10. CONNECTOR KEEP-OUT ZONE.

11. A \triangle SYMBOL WILL BE NEXT TO ANY DIMENSION, VIEW, OR NOTE WHICH HAS BEEN MODIFIED WITH THE CURRENT DRAWING REVISION.

Tous droits strictement réservés. Reproduction ou communication a des tiers interdite sous quelque forme que ce soit sans autorisation écrite du propriétaire. Propriété de c FCI. Droits de reproduction FCI.



All rights strictly reserved. Reproduction or issue to third parties in any form whatever is not permitted without written authority from the proprietor. Property of FCI. Copyright FCI.

mat'l code		SEE NOTE 2		tolerances unless otherwise specified		CUSTOMER			
ltr	ecn no.	dr	date	linear	.XX±.01/0.X±0.3	COPY		www.fciconnect.com	
C				projection	.XXY±.005/0.XX±0.13	INCH/MM		title	
				angles	.XXX±.0020/0.XXX±0.051	1:1		16S + 4P	
				dr	0° ± 2°	scale		R/A SOLDER RECEPTACLE	
				enrg	T. BRUNGARD 11/15/02	product family		PwrBlade	
				chr	M. MOSTOLLER 11/15/02	size		code	
				appd	M. MOSTOLLER 11/15/02	dwg no		213	
sheet index		revision sheet				A		51771-003	
								4 of 4	