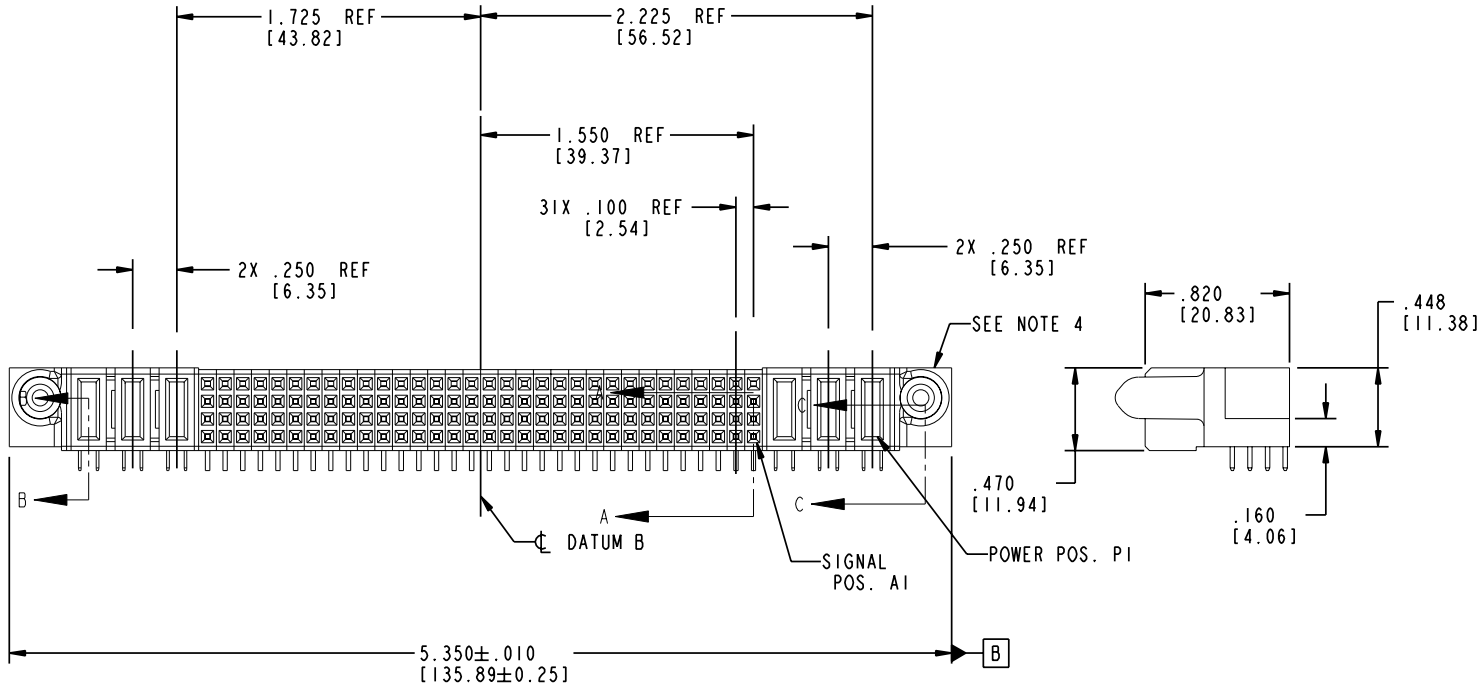
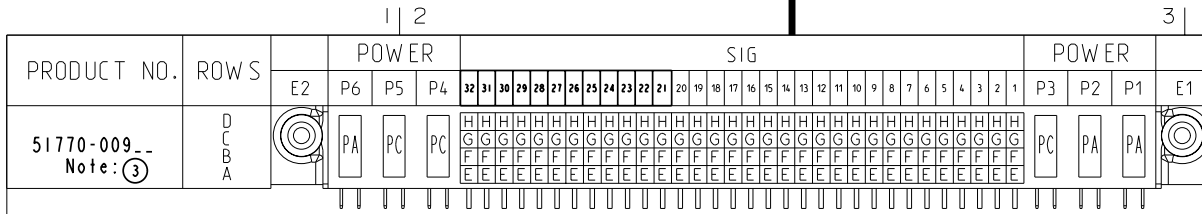


Tous droits strictement réservés. Reproduction ou communication a des tiers interdite sous quelque forme que ce soit sans autorisation écrite du propriétaire. Propriété de c FCI. Droits de reproduction FCI.

All rights strictly reserved. Reproduction or issue to third parties in any form whatever is not permitted without written authority from the proprietor. Property of FCI. Copyright FCI.



CODE	DIM "M" MATING LENGTH	CONTACT TYPE
E	N/A [N/A]	SIGNAL
F	N/A [N/A]	SIGNAL
G	N/A [N/A]	SIGNAL
H	N/A [N/A]	SIGNAL
PA	.042 [1.07]	POWER
PC	.092 [2.34]	POWER

mat'l code		SEE NOTE 2		tolerances unless otherwise specified		CUSTOMER		 www.fciconnect.com	
ltr	ecn no.	dr	date	linear	linear	COPY		title	
A	V03-0201	DAI	02/21/03		.XX±.01/0.X±0.3	projection		3P +128S + 3P	
B	DG05-0182	SJ	06/23/05		.XXX±.005/0.XX±0.13			R/A SOLDER RECEPTACLE	
				angles	.XXX±.0020/0.XX±0.051			product family	
				dr	0 ± 2°	INCH/MMM		PwrBlade	
				enr	D. INGRAM 02/21/03	scale		code	
				chr	M. MOSTOLLER 02/21/03	1:1		213	
				appd	M. MOSTOLLER 02/21/03	A		sheet	
sheet index	revision	B	B	B	B	51770-009		1 of 4	
	sheet	1	2	3	4	cage code		4	
						22526			

Pro/E

PDM: Rev:B

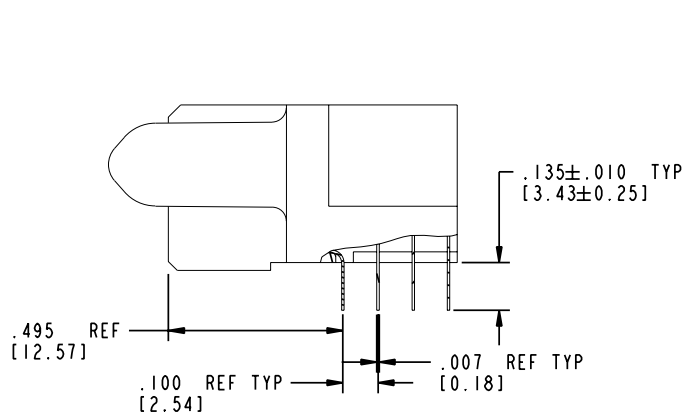
STATUS:Released

Printed: Aug 14, 2007

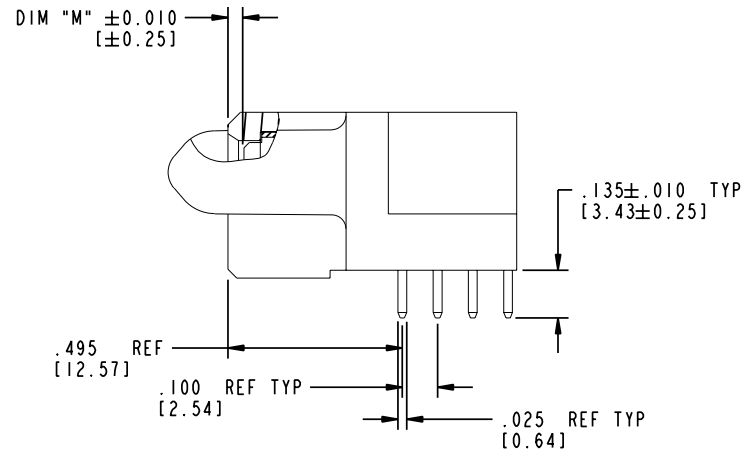
Tous droits strictement réservés. Reproduction ou communication a des tiers interdite sous quelque forme que ce soit sans autorisation écrite du propriétaire. Propriété de c FCI. Droits de reproduction FCI.

All rights strictly reserved. Reproduction or issue to third parties in any form whatever is not permitted without written authority from the proprietor. Property of FCI. Copyright FCI.

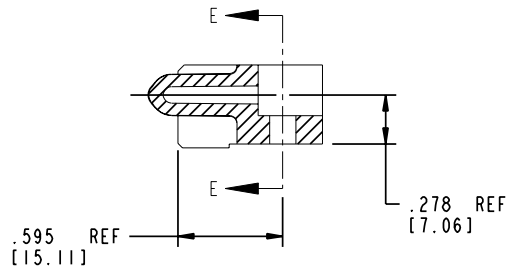
PRODUCT NUMBER
51770-009
 Note: ③



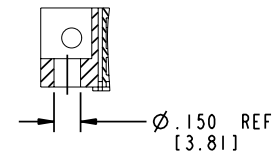
BROKEN-OUT SECTION A-A
 SCALE 2:1



BROKEN-OUT SECTION B-B
 SCALE 2:1



SECTION C-C



PARTIAL SECTION E-E

mat'l code		SEE NOTE 2		tolerances unless otherwise specified		CUSTOMER		 www.fciconnect.com	
ltr	ecn no.	dr	date	linear	.XX±.01/0.X±0.3	COPY		projection	title
B				angles	.XXX±.005/0.XX±0.13	INCH/MM			3P +128S + 3P R/A SOLDER RECEPTACLE
				dr	.XXX±.0020/0.XX±0.051	scale		product family	code
				enfr	0°±2°	1:1		PwrBlade	213
				chr	D. INGRAM 02/21/03			size	sheet
				appd	M. MOSTOLLER 02/21/03			51770-009	2 of 4
					M. MOSTOLLER 02/21/03				
sheet index	revision sheet								

cage code **22526**

Pro/E

PDM: Rev:B

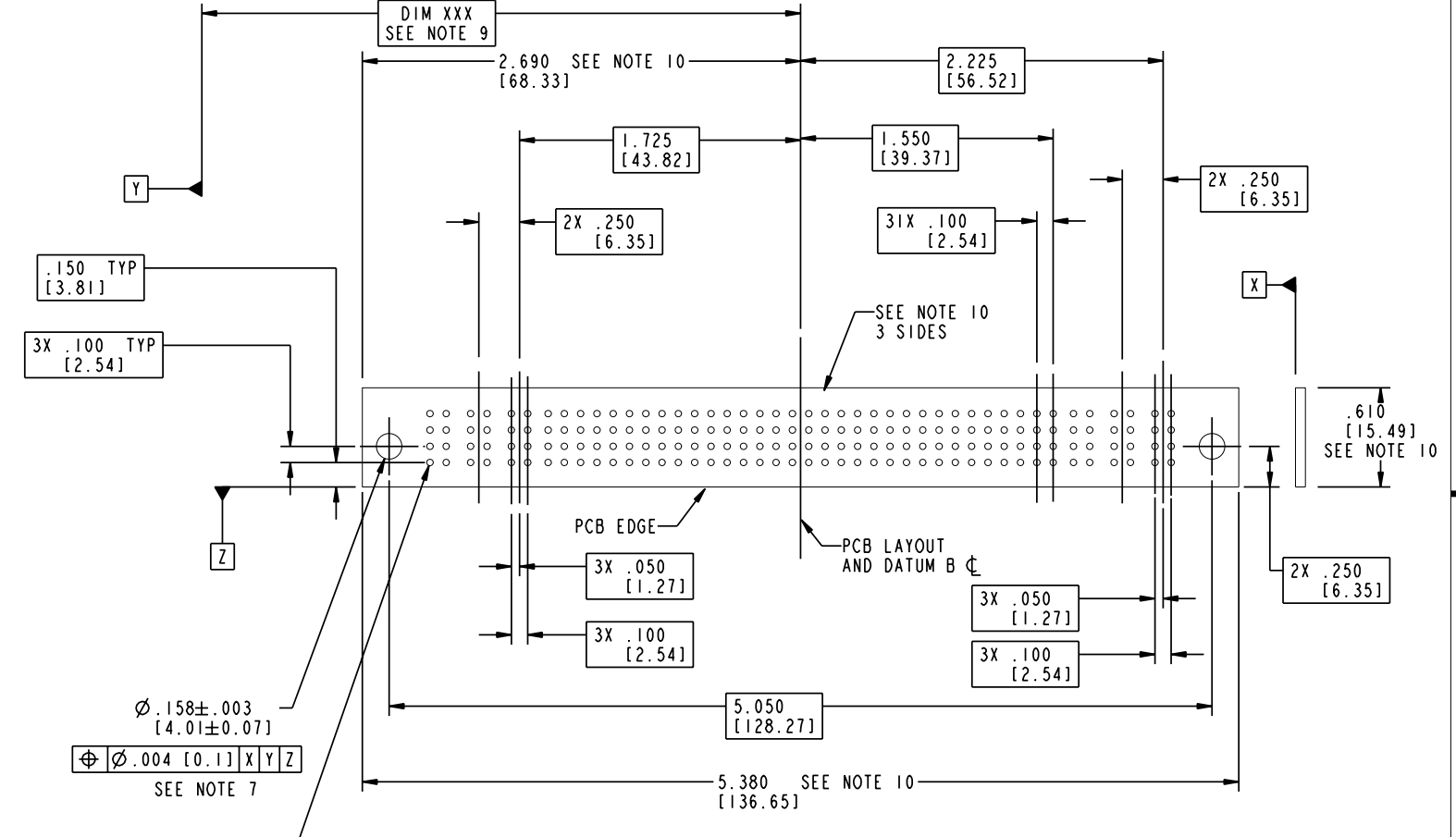
STATUS: Released

Printed: Aug 14, 2007

Tous droits strictement réservés. Reproduction ou communication a des tiers interdite sous quelque forme que ce soit sans autorisation écrite du propriétaire. Propriété de c FCI. Droits de reproduction FCI.

All rights strictly reserved. Reproduction or issue to third parties in any form whatever is not permitted without written authority from the proprietor. Property of FCI. Copyright FCI.

PRODUCT NUMBER
51770-009_
 Note: ③



$\varnothing .158 \pm .003$
 [4.01 ± 0.07]
 $\varnothing .004$ [0.1] X|Y|Z
 SEE NOTE 7

$\varnothing .040 \pm .003$
 [1.02 ± 0.07]
 $\varnothing .004$ [0.1] X|Y|Z
 SEE NOTE 8

mat'l code		SEE NOTE 2		tolerances unless otherwise specified		CUSTOMER		 www.fciconnect.com	
ltr	ecn no.	dr	date	linear	$.XX \pm .01 / 0.X \pm 0.3$ $.XXX \pm .005 / 0.XX \pm 0.13$ $.XXX \pm .0020 / 0.XX \pm 0.051$	projection	title		
B				angles	$0 \pm 2^\circ$		3P +128S + 3P R/A SOLDER RECEPTACLE		
		dr	D. INGRAM	02/21/03		INCH/MM	product family	PwrBlade	code
		engr	M. MOSTOLLER	02/21/03		scale	size	dwg no	213
		chr	M. MOSTOLLER	02/21/03		1:1		51770-009	sheet
		appd	M. MOSTOLLER	02/21/03					3 of 4
sheet index	revision sheet								

cage code **22526**

Pro/E

PDM: Rev:B

STATUS: Released

Printed: Aug 14, 2007

Tous droits strictement réservés. Reproduction ou communication à des tiers interdite sous quelque forme que ce soit sans autorisation écrite du propriétaire. Propriété de c FCI. Droits de reproduction FCI.

A
FCI

All rights strictly reserved. Reproduction or issue to third parties in any form whatever is not permitted without written authority from the proprietor. Property of FCI. Copyright FCI.

B

PRODUCT NUMBER

51770-009_
Note: ③

NOTES:

1. DIMENSIONS AND TOLERANCES ARE IN ACCORDANCE WITH ASME Y14.5M, 1994 UNLESS OTHERWISE SPECIFIED.

CONNECTOR NOTES:

② HOUSING MATERIAL: UL 94 V-0 GLASS FILLED

HIGH-TEMP THERMOPLASTIC
POWER CONTACT MATERIAL: COPPER ALLOY
SIGNAL PIN MATERIAL: COPPER ALLOY

3. PLATING:

51770-009 Singal Pin: 30u"/0.76um Au OVER 50u"/1.27um Ni ON THE CONTACT AREA,
AND 100u"/2.54um SnPb PLATING OVER 50u"/1.27um Ni ON THE TERMINATION SECTION.
Power Pin: 30u"/0.76um Au OVER 50u"/1.27um Ni ON THE CONTACT AREA,
AND 100u"/2.54um SnPb PLATING OVER 50u"/1.27um Ni ON THE TERMINATION SECTION.

51770-009LF Singal Pin: 30u"/0.76um Au OVER 50u"/1.27um Ni ON THE CONTACT AREA,
AND 78u"/2.00um Sn PLATING OVER 50u"/1.27um Ni ON THE TERMINATION SECTION.
Power Pin: 30u"/0.76um Au OVER 50u"/1.27um Ni ON THE CONTACT AREA,
AND 78u"/2.00um Sn PLATING OVER 50u"/1.27um Ni ON THE TERMINATION SECTION.

PART NUMBER 51770-009LF MEETS EUROPEAN UNION DIRECTIVE AND OTHER COUNTRY REGULATIONS AS DESCRIBED IN GS-22-008.

THE HOUSING WILL WITHSTAND EXPOSURE TO 260° PEAK TEMPERATURE FOR 10 SECONDS IN A WAVE SOLDER APPLICATION WITH A CIRCUIT BOARD.

④ MANUFACTURER'S NAME, P/N, AND DATE CODE TO APPEAR ON THIS SURFACE.

5. PRODUCT SPECIFICATION GS-12-149.
APPLICATION SPECIFICATION BUS-20-067.

PCB NOTES:

6. ALL HOLE DIAMETERS ARE FINISHED HOLE SIZE.

⑦ MOUNTING HOLES, WHERE APPLICABLE, ARE UNPLATED.

⑧ $\varnothing .0453 \pm .0010$ [1.151 ± 0.025] DRILLED HOLES PLATED WITH
.0003 [0.008] MIN SnPb OVER .001 [0.03]
TO .003 [0.08] Cu PLATING TO ACHIEVE
 $\varnothing .040 \pm .003$ [1.02 ± .07] HOLE.

⑨ "DIM XXX" TO BE DETERMINED BY THE CUSTOMER.

⑩ CONNECTOR KEEP-OUT ZONE.

mat'l code				SEE NOTE 2				tolerances unless otherwise specified				CUSTOMER				A FCI www.fciconnect.com			
ltr	ecn no.	dr	date	linear	$.XX \pm .01/0.X \pm 0.3$			COPY				projection				title			
B					$.XXX \pm .005/0.XX \pm 0.13$							3P +128S + 3P							
				angles	$0 \pm 2^\circ$							R/A SOLDER RECEPTACLE							
				dr	D. INGRAM	02/21/03	INCH/MM				product family				PwrBlade				
				enrg	M. MOSTOLLER	02/21/03	A				size				213				
				chr	M. MOSTOLLER	02/21/03	scale				51770-009				sheet				
				appd	M. MOSTOLLER	02/21/03	1:1				A				4 of 4				
sheet index		revision sheet																	

Pro/E

cage code **22526**

PDM: Rev:B

STATUS: **Released**

Printed: Aug 14, 2007