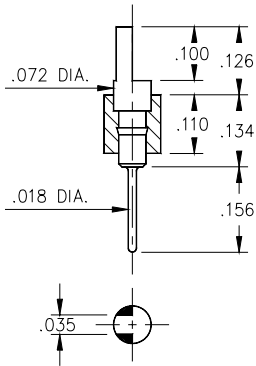
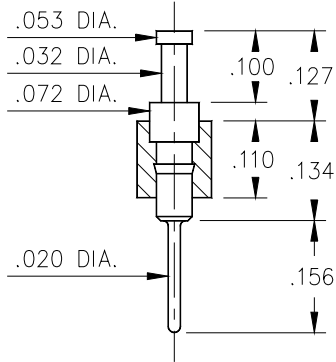


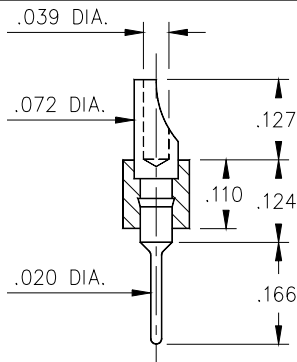
**Fig. 1**



**Fig. 2**



**Fig. 3**



**Fig. 4**

- Series 350, 360, 370, 380 single row Header Strips come with various contacts (pin, slotted head, turret and solder cup) with pluggable solder tails. (M-M# 0290, 0282, 0700, or 8000 see pages 173 & 174 for details).



### Ordering Information

<b>Fig. 1</b>	<b>Series 350...001</b> .025 Pin / .018 Solder Tail
	350-XX-1__-00-001 Specify # of pins → 01-64
<b>Fig. 2</b>	<b>Series 360...001</b> Slotted Head / Solder Tail
	360-XX-1__-00-001 Specify # of pins → 01-64
<b>Fig. 3</b>	<b>Series 370...001</b> Turret / Solder Tail
	370-XX-1__-00-001 Specify # of pins → 01-64
<b>Fig. 4</b>	<b>Series 380...001</b> Solder Cup / Solder Tail
	380-XX-1__-00-001 Specify # of pins → 01-64

*XX= Plating Code  
See Below*

*For High  
Temperature  
Insulators Add '100'  
To End Of  
Part Numbers*

SPECIFY PLATING CODE XX=	<b>10</b>	<b>90</b>		
Pin Plating	10μ" Au	200μ" Sn/Pb		