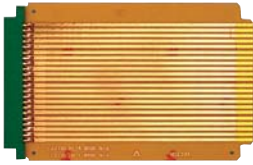


Card Edge Extenders

Vectorbord® extender cards provide convenient access to functioning circuit boards for testing. Engineered for quality, Vectorbord® extenders include low insertion force and gold-plated contacts for reliable connection and minimum wear on board.



3690
 Extension length 6.5"
 22 contacts per side on 0.156" centers
 Fits Vector Series 12 or 13 Subracks
 Current rating: 5 amps at 10° F rise
 Voltage rating: 200 RMS or 300 VDC
 Trace Width: 0.092"
 Capacitance: Between traces, 9pf
 Length of trace: 4.5pf



3690-6
 Extension length 11.0"
 22 contacts per side on 0.156" centers
 Fits Vector Series 14 Subracks
 Current rating: 5 amps at 10 degrees F rise
 Voltage rating: 200 RMS or 300 VDC
 Trace Width: 0.092"
 Capacitance: Between traces, 15pf
 Length of trace: 8.0pf



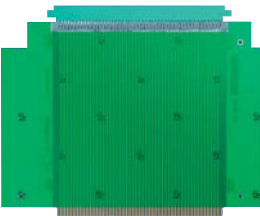
3690-8
 Extension length: 5.5"
 22 contacts per side on 0.1" centers
 Fits Vector Series 12 or 13 Subracks
 Current rating: 5 amps at 10 degrees F rise
 Voltage rating: 200 RMS or 300 VDC
 Trace Width: 0.062"
 Capacitance: Between traces, 9pf
 Length of trace: 3.2pf



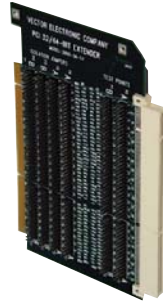
3690-16
 Extension length: 6.5"
 28 contacts per side on 0.125" centers
 Fits Vector Series 12 or 13 Subracks
 Also fits STD bus specifications
 Current rating: 5 amps at 10 degrees F rise
 Voltage rating: 200 RMS or 300 VDC
 Trace Width: 0.062"
 Capacitance: Between traces, 9pf
 Length of trace: 4.5pf



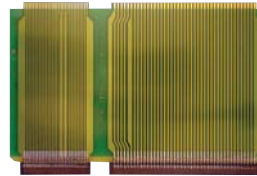
3690-2
 Extension length: 11.0"
 36 contacts per side on 0.10" centers
 Fits Vector Series 14 Subracks
 Current rating: 5 amps at 10 degrees F rise
 Voltage rating: 200 RMS or 300 VDC
 Trace Width: 0.062"
 Capacitance: Between traces, 18pf
 Length of trace: 6.3pf



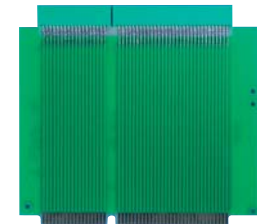
3690-12 S100
 Extension length: 7.5"
 50 contacts per side on 0.125" centers
 Double sided controlled impedance board
 High reliability, gold plated connector (mounted)
 Contact fingers on card are nickel/gold-plated
 2 oz. copper clad, flame retardant epoxy glass composite material - 94V-O-UL classification
 Current rating: 5 amps at 10 degrees F rise
 Voltage rating: 200 RMS or 300 VDC



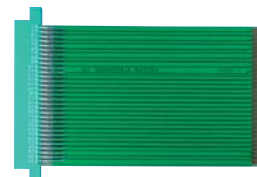
3690-34-3V or 3690-34-5V PCI
 Extender card for PCI expansion card uses the "universal" pattern for 32/64 bits in the "short-card" size
 Extenders are size and pin compatible with both 5.0V & 3.3V versions respectively
 Length: 6.875" (174.6mm)
 Contacts: 120 Ni/Gold, 0.050" centers (2x60 tabs removed in two areas for keying space)
 Height: 4.2" (106.7mm)
 Layers: 4 Power layers may use 3.3V or 5.0V
 Decoupling Caps: Installed. .1mf, 20%
 Mounting Bracket: Included



3690-18 Multibus
 Extension length: 7.65"
 Double sided controlled impedance board
 30/43 contacts each side on 0.100" centers
 Reliable gold plated connector mounted on top and connected to circuit traces
 Nickel/gold-plated fingers on extender card
 Current rating: 5 amps at 10 degrees F rise
 Voltage rating: 200 RMS or 300 VDC
 Material: FR4, 2 oz copper clad
 Also functions as cable terminator or experimental plugboard



3690-26 IBM AT-ISA
 Extension length: 5.6"
 Double sided controlled impedance board
 18/31 contacts each side on 0.100" centers
 Current rating: 5 amps at 10 degrees F rise
 Voltage rating: 200 RMS or 300 VDC
 Test points for mounting probes on each connector line
 Also available 3690-26-1 multilayer extender with decoupling capacitors



3690-22 IBM PC, XT
 Extension length: 5.7"
 Double sided controlled impedance board
 31 contacts each side on 0.100" centers
 Test points for mounting probes on each connector line
 Current rating: 5 amps at 10 degrees F rise
 Voltage rating: 200 RMS or 300 VDC
 Flame retardant laminate construction, 2 oz copper clad

Extenders

For a list of mating Vector Edge Connectors please see pages 66 and 67.