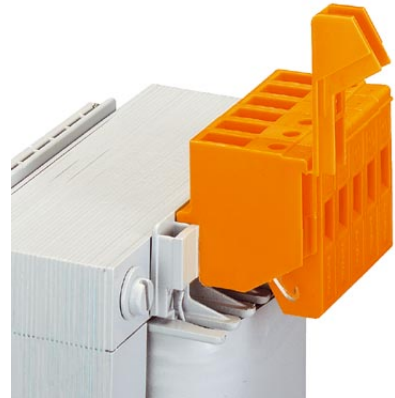


## TRKS 4-FS OG

Order No.: 2702160

The illustration shows versions TRKS 4-FS and TRKSD 4-FS in orange

<http://eshop.phoenixcontact.de/phoenix/treeViewClick.do?UID=2702160>

Transformer terminal block, single terminal block version

Commercial data	
EAN	4017918060572
Pack	50 Pcs.
Customs tariff	85369010
Weight/Piece	0.005903 KG
Catalog page information	Page 317 (CL-2002)

**Product notes**WEEE/RoHS-compliant since:  
01/01/2003

<http://www.download.phoenixcontact.com>  
Please note that the data given here has been taken from the online catalog. For comprehensive information and data, please refer to the user documentation. The General Terms and Conditions of Use apply to Internet downloads.

**Technical data**

General	
Note	For transformers on ships, saltwater-proof DIN rails must be used according to the regulations of Germanic Lloyd. This requirement is fulfilled by all rail designs.
Number of connections	2
Color	orange
Insulating material	PA

Inflammability class acc. to UL 94	V2
<b>Dimensions</b>	
Width	7.5 mm
Length	35 mm
Height	27.5 mm
<b>Technical data</b>	
Rated surge voltage	8 kV
Pollution degree	3
Surge voltage category	III
Connection in acc. with standard	IEC / EN
Nominal current $I_N$	25 A
Nominal voltage $U_N$	(voltage data only possible in conjunction with transformer)
<b>Connection data</b>	
Conductor cross section solid min.	0.2 mm <sup>2</sup>
Conductor cross section solid max.	6 mm <sup>2</sup>
Conductor cross section stranded min.	0.2 mm <sup>2</sup>
Conductor cross section stranded max.	4 mm <sup>2</sup>
Conductor cross section AWG/kcmil min.	24
Conductor cross section AWG/kcmil max	10
Conductor cross section stranded, with ferrule without plastic sleeve min.	0.25 mm <sup>2</sup>
Conductor cross section stranded, with ferrule without plastic sleeve max.	4 mm <sup>2</sup>
Conductor cross section stranded, with ferrule with plastic sleeve min.	0.25 mm <sup>2</sup>
Conductor cross section stranded, with ferrule with plastic sleeve max.	2.5 mm <sup>2</sup>
2 conductors with same cross section, solid min.	0.2 mm <sup>2</sup>
2 conductors with same cross section, solid max.	1.5 mm <sup>2</sup>
2 conductors with same cross section, stranded min.	0.2 mm <sup>2</sup>
2 conductors with same cross section, stranded max.	1.5 mm <sup>2</sup>
2 conductors with same cross section, stranded, ferrules without plastic sleeve, min.	0.25 mm <sup>2</sup>

2 conductors with same cross section, stranded, ferrules without plastic sleeve, max.	1.5 mm <sup>2</sup>
2 conductors with same cross section, stranded, TWIN ferrules with plastic sleeve, min.	0.5 mm <sup>2</sup>
2 conductors with same cross section, stranded, TWIN ferrules with plastic sleeve, max.	2.5 mm <sup>2</sup>
Type of connection	Screw/Slip-on connection
Stripping length	8 mm
Internal cylindrical gage	A4
Screw thread	M 3
Tightening torque, min	0.6 Nm
Tightening torque max	0.8 Nm
Slip-on connection	6.3/2.8 x 0.8 mm

### Certificates / Approvals

#### Approval logo



#### CSA

Nominal voltage U <sub>N</sub>	600 V
Nominal current I <sub>N</sub>	30 A
AWG/kcmil	28-10

#### CUL

Nominal voltage U <sub>N</sub>	600 V
Nominal current I <sub>N</sub>	30 A
AWG/kcmil	30-10

#### UL

Nominal voltage U <sub>N</sub>	600 V
Nominal current I <sub>N</sub>	30 A
AWG/kcmil	30-10
Certification	BV, CSA, CUL, GL, GOST, LR, RS, UL, VDE-PZI

### Accessories

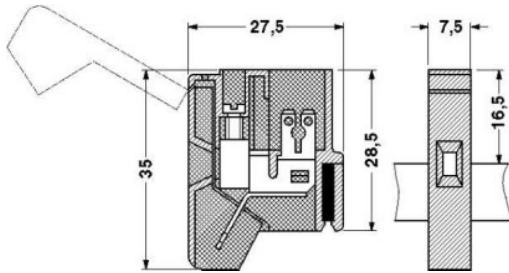
Item	Designation	Description
------	-------------	-------------

#### Assembly

3000308	ATP-TRKS	Partition plate, for visual and electrical separation of neighboring terminal blocks, width: 7.5 mm, color: Gray
---------	----------	--

### Drawings

Dimensioned drawing



**Address**

PHOENIX CONTACT GmbH & Co. KG  
Flachsmarktstr. 8  
32825 Blomberg, Germany  
Phone +49 5235 3 00  
Fax +49 5235 3 41200  
<http://www.phoenixcontact.de>



© 2008 Phoenix Contact  
Technical modifications reserved;