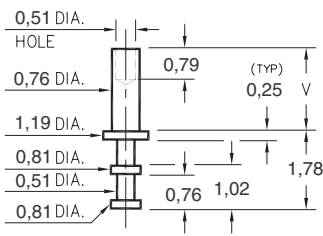


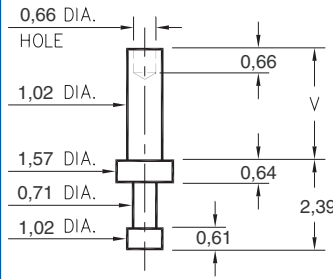
2111



- X -	Board Thickness	Length V
1	0,79	1,35
2	1,57	2,13
3	2,39	2,92

2111-X-00-XX-00-00-07-0
Swage mount in 0,84 hole

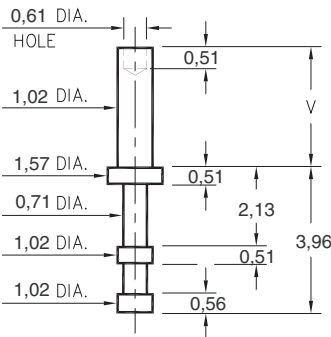
2113



- X -	Board Thickness	Length V
1	0,79	1,35
2	1,57	2,13
3	2,39	2,92
4	3,18	3,73

2113-X-00-XX-00-00-07-0
Swage mount in 1,09 hole

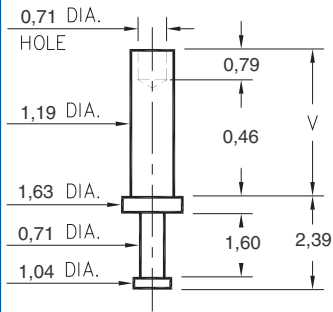
2108



- X -	Board Thickness	Length V
1	0,78	1,35
2	1,57	2,13
3	2,39	2,92
4	3,18	3,73

2108-X-00-XX-00-00-07-0
Swage mount in 1,09 hole

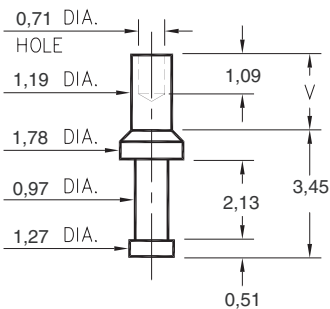
2102



- X -	Board Thickness	Length V
5	0,41	0,89
1	0,79	1,37
2	1,57	2,13
3	2,39	2,92
4	3,18	3,73

2102-X-00-XX-00-00-07-0
Swage mount in 1,32 hole

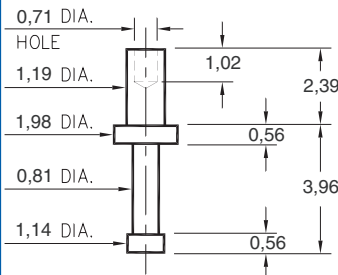
2109



- X -	Board Thickness	Length V
1	0,79	1,32
2	1,57	2,16

2109-X-00-XX-00-00-07-0
Swage mount in 1,32 hole

2324



2324-2-00-XX-00-00-07-0
Swage mount in 1,32 hole
for 1,57 thick board

SPECIFICATIONS

PIN MATERIAL:
Brass Alloy 360, 1/2 Hard
(Except Swage pins which
are annealed)

**PART MANUFACTURED IN
INCHES, METRIC FOR REF ONLY**

TOLERANCES ON:
LENGTHS: ± 0,13
DIAMETERS: ± 0,05
ANGLES: ± 2°

ORDER CODE: 2XXX - X - 00 - XX - 00 - 00 - 07 - 0

BASIC PART #

SPECIFY PIN FINISH:

- 01** 5,08µm TIN/LEAD OVER NICKEL
- 80** 5,08µm TIN OVER NICKEL \diamond
- 44** 7,62µm SILVER OVER COPPER \diamond
- 50** 7,62µm ELECTRO-SOLDER
(60/40 SnPb)

