

Right Angle Panel DIP Switches

Features

Optimized Mechanical Features

- Designed for panel applications
Saves cost of right angle socket
- Multiple circuit configurations available
- Standard 2.54mm (.100") x 2.54mm (.100") centers, uses minimum PCB real estate
- Sealed version optional: assures contaminant-free switch operation after wave soldering and cleaning
- Available with low profile, standard, or extended actuators for SPST circuitry

Optimized Contact System

- Contact wiping action on make and break
- Integral terminal and contact locked into high temperature plastic base
- Electrostatic discharge shield rated to 22 KV

Materials

- Series 206RA, gold plated contacts for long-term contact corrosion resistance
- Series 208RA, tin plated contacts
- All UL 94 V-0 plastics used
- RoHS compliant



Series 206RA – Premium Gold Plated Contacts
Series 208RA – Economical Tin Plated Contacts

Electrical and Mechanical Specifications

Switch Function

- SPST - 2 through 10 and 12 positions
- SPDT&DPST- 1 through 6 positions
- DPDT&4PST - 1 through 3 positions
- 3PST - 1 through 4 positions

Switch Contact Resistance

| Switch Series | Initial, max. | End of life, max. |
|---------------|---------------|-------------------|
| 206RA | 50 milliohms | 100 milliohms |
| 208RA | 100 milliohms | 500 milliohms |

Insulation Resistance

1,000 megohms minimum between insulated terminals

Dielectric Strength

500 VAC for 1 minute between adjacent switches

Nonswitching Rating

100 mA or 50 VDC maximum

Switch Capacitance

5.0 pF maximum between adjacent closed switches

Operating Temperature

-55°C to +85°C

Actuation Life

- Series 206RA: 10,000 cycles switching 50 mA @ 24 VDC
- Series 208RA: 2,000 cycles switching 50 mA @ 24 VDC

Allowable Solder Time

Wave soldering up to 5 seconds at 260°C

Vibration

Per MIL-STD-202F, method 204D, condition B (.06" or 15 G's between 10 HZ to 2K HZ) with no contact inconsistencies greater than 1 microsecond

Shock

Per MIL-STD-202F, method 213B, condition A (50 G's) with no contact inconsistencies greater than 1 microsecond

Sealing

- Bottom epoxy seal optional
- Top tape seal optional

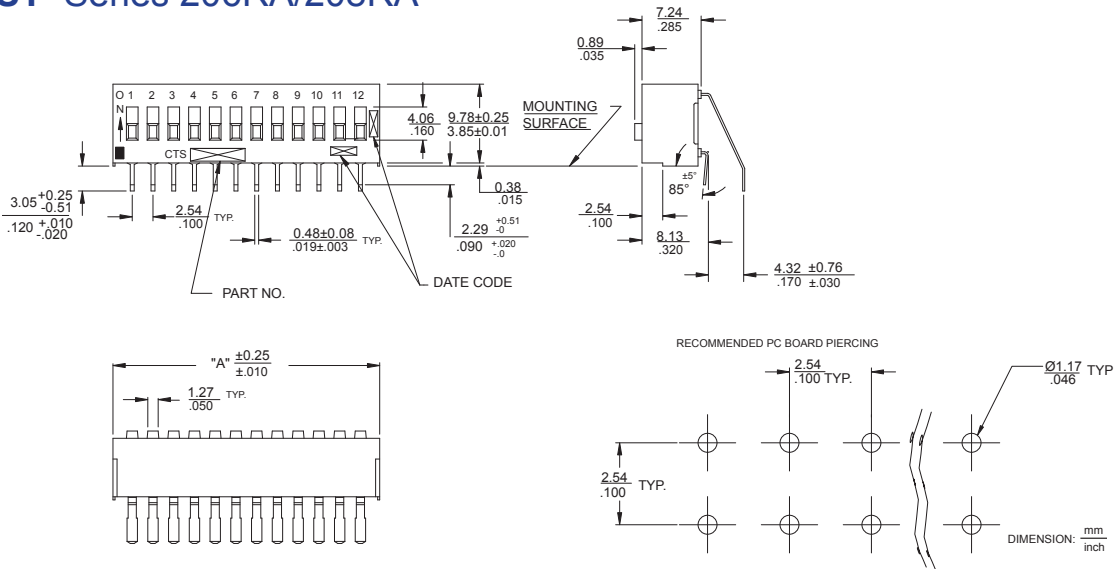
Marking

Special side or top marking available-consult CTS

Packaging

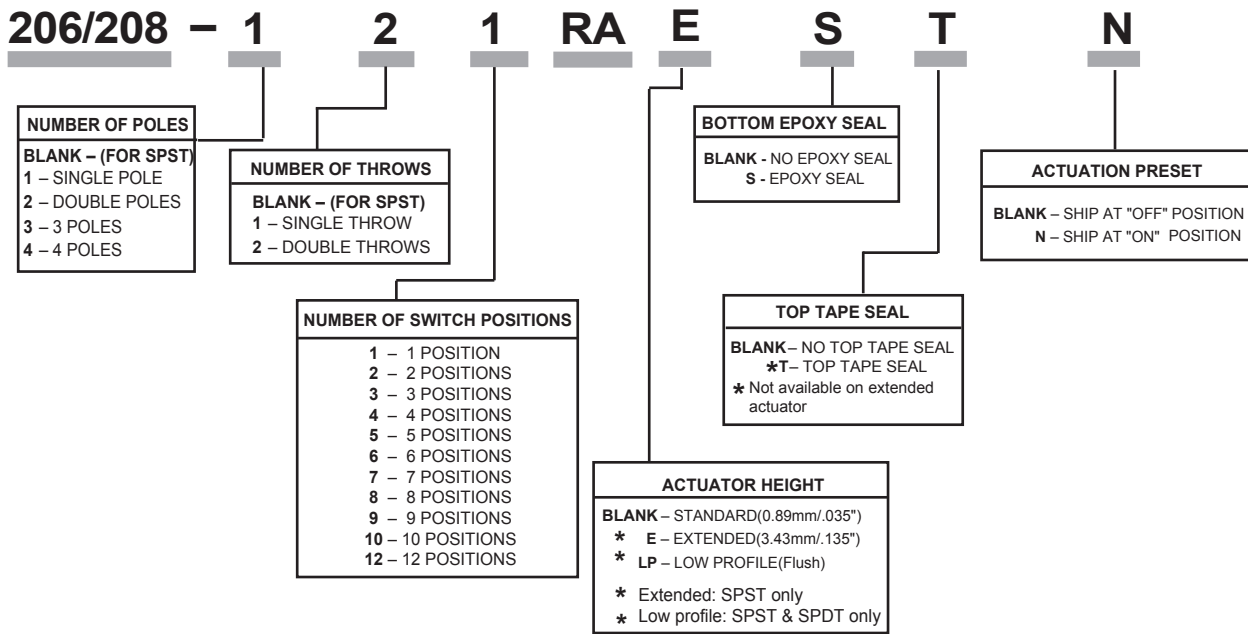
Standard : Anti-Static tube packaging

SPST Series 206RA/208RA



Please find panel drawing of 206/208 RA DIP switches with SPDT, DPST, DPDT, 3PST, or 4PST circuitry from 206/208 series date sheet

Ordering Information



| Standard Part # | | SPST Switches | | SPDT & DPST Switches | | 3PST Switches | | DPDT / 4PST Switches | | |
|----------------------|--------------------|---------------|--------------------|----------------------|---------------|--------------------|---------------|----------------------|---------------|---------------|
| Dimensions (mm/inch) | No of SW positions | SPST P/N | No of SW positions | SPDT P/N | DPST P/N | No of SW positions | 3PST P/N | No of SW positions | DPDT P/N | 4PST P/N |
| 7.26 / .286 | 2 | 206/208-2 RA | 1 | 206/208-121RA | 206/208-211RA | — | — | — | — | — |
| 9.80 / .386 | 3 | 206/208-3 RA | — | — | — | 1 | 206/208-311RA | — | — | — |
| 12.34 / .486 | 4 | 206/208-4 RA | 2 | 206/208-122RA | 206/208-212RA | — | — | 1 | 206/208-221RA | 206/208-411RA |
| 14.88 / .586 | 5 | 206/208-5 RA | — | — | — | — | — | — | — | — |
| 17.42 / .686 | 6 | 206/208-6 RA | 3 | 206/208-123RA | 206/208-213RA | 2 | 206/208-312RA | — | — | — |
| 19.96 / .786 | 7 | 206/208-7 RA | — | — | — | — | — | — | — | — |
| 22.50 / .886 | 8 | 206/208-8 RA | 4 | 206/208-124RA | 206/208-214RA | — | — | 2 | 206/208-222RA | 206/208-412RA |
| 25.04 / .986 | 9 | 206/208-9 RA | — | — | — | 3 | 206/208-313RA | — | — | — |
| 27.58 / 1.086 | 10 | 206/208-10 RA | 5 | 206/208-125RA | 206/208-215RA | — | — | — | — | — |
| 32.66 / 1.286 | 12 | 206/208-12 RA | 6 | 206/208-126RA | 206/208-216RA | 4 | 206/208-314RA | 3 | 206/208-223RA | 206/208-413RA |