

Banana Plug - Insulated Round Body Solderless

SPECIFICATIONS

Plug Body: Brass per QQ-B-626D

Plug Spring: Nickel silver per QQ-C-585

Finish: Nickel

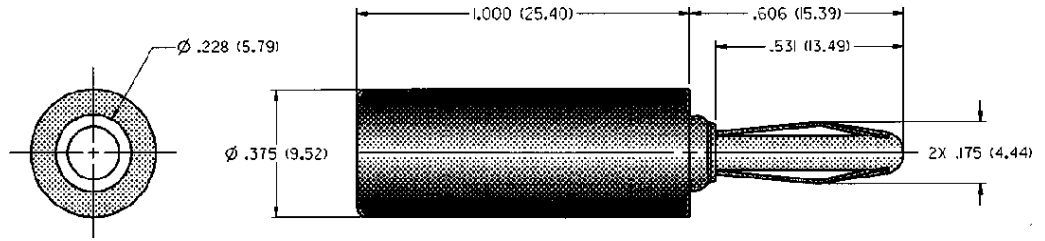
Insulated Handle: Nylon 6/6 per ASTM D4066

RATINGS

Current: 15 amps

Breakdown Voltage: 3500 Vrms minimum †

Contact Resistance: 0.010 ohms maximum



NICKEL PLATING

108-1723-103 Black

For Standard Banana Jack: .166 (4.23) Diameter

FEATURES:

- Wire locked in place by screwing down handle
- Accepts up to 16 gauge wire
- Nylon UL approved for self extinguishing