

Banana Plug - Insulated Stacking Single Type

SPECIFICATIONS

Plug Body: Brass per QQ-B-626D

Plug Spring: Nickel silver per QQ-C-585

Finish: Nickel

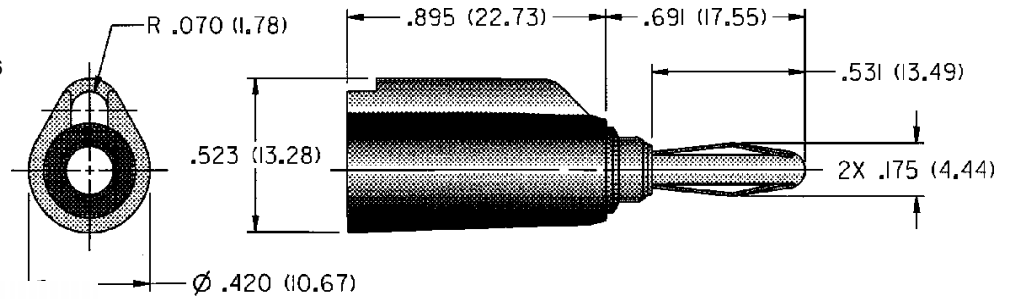
Insulated Handle: Nylon 6/6 per ASTM D4066

RATINGS

Current: 15 amps

Breakdown Voltage: 3500 Vrms minimum †

Contact Resistance: 0.010 ohms maximum



| |
|-----------------------|
| NICKEL PLATING |
| 108-1082-001 Red |

For Standard Banana Jack: .166 (4.23) Diameter

FEATURES:

- Built in strain relief for long life
- Solder stud accepts up to 16 gauge wire
- Accepts standard banana plug from rear
- Nylon UL approved for self extinguishing