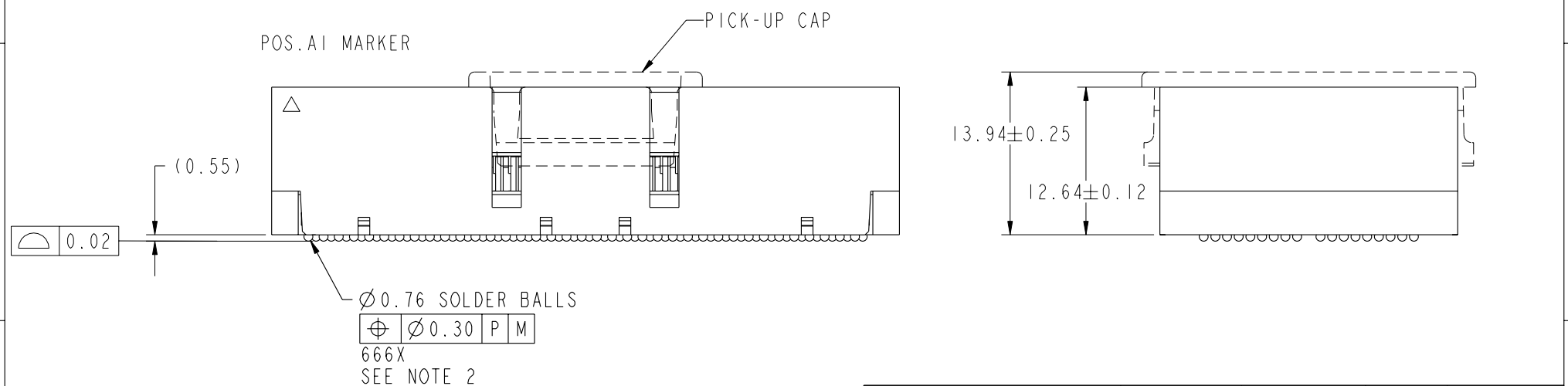
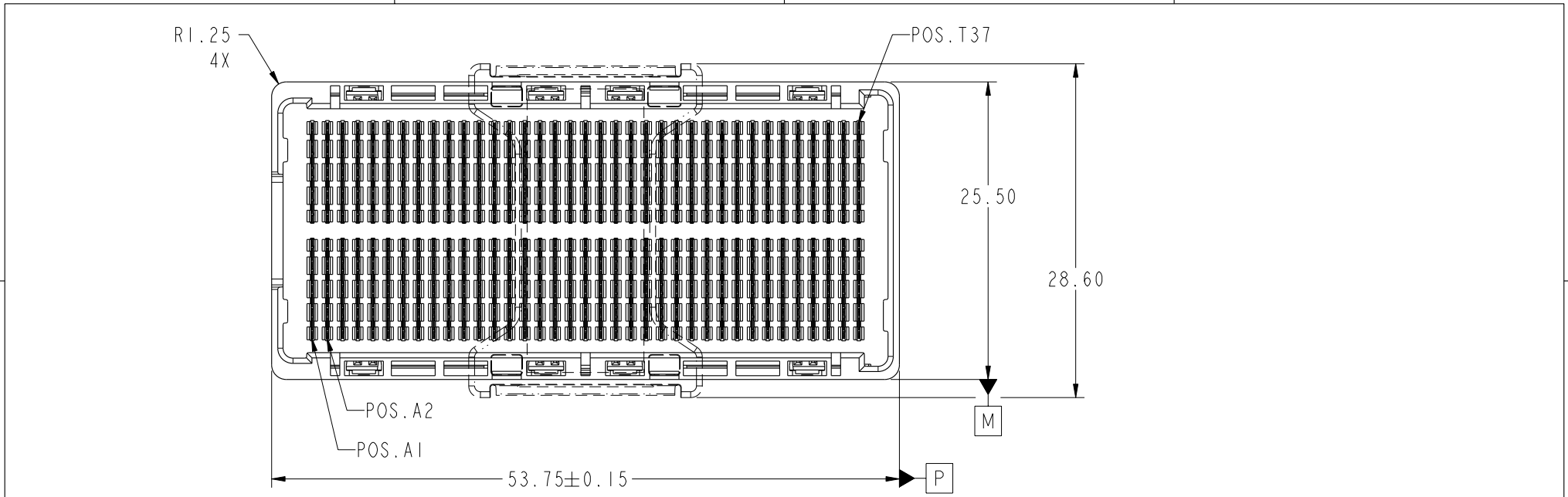




Copyright FCI.



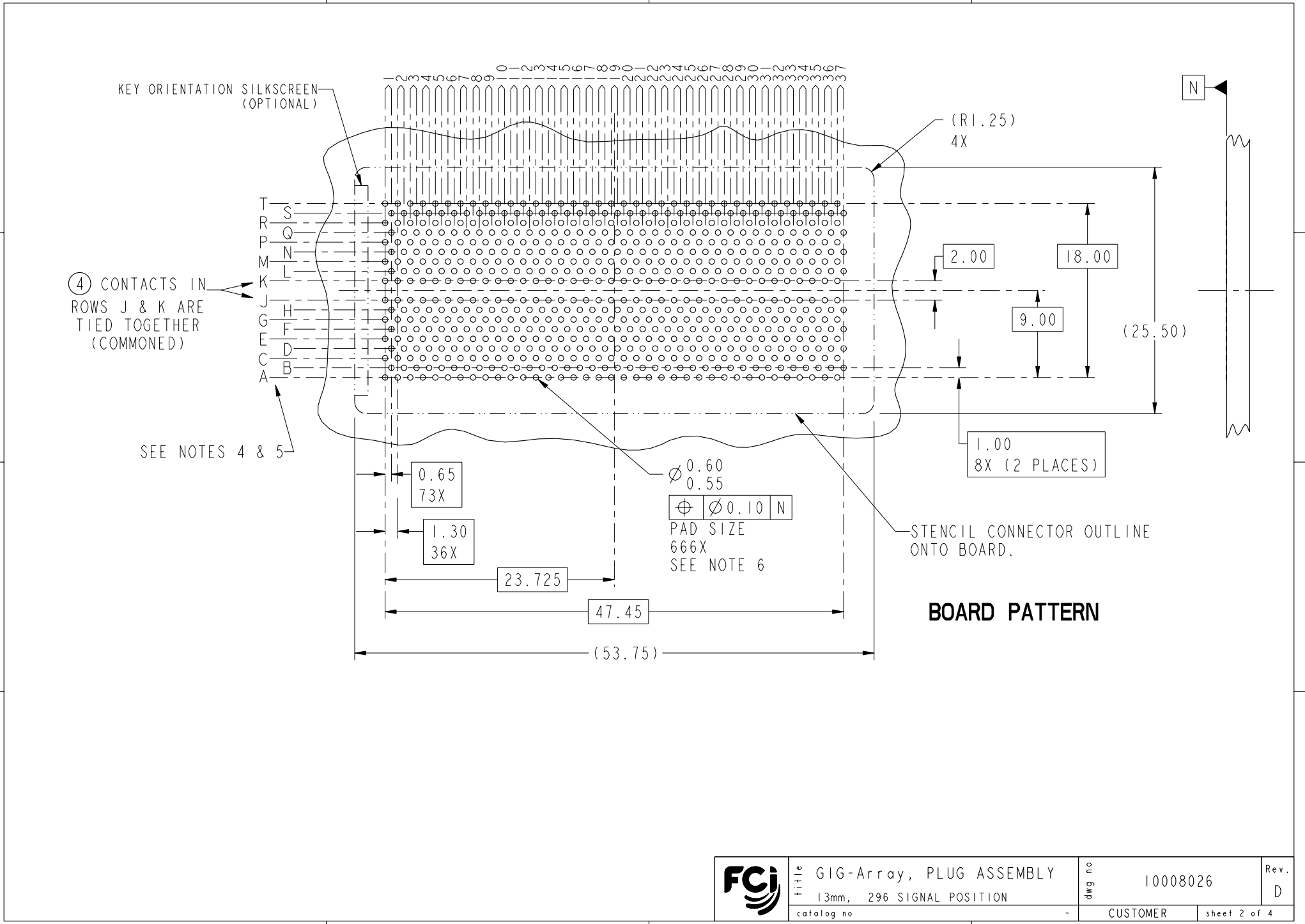
rev	ecn no	dr	date
A	V05-0062	TAB	2005/01/19
B	V05-0052	VS	2005/10/14
C	V06-0558	LP	2006/06/12
D	V07-0440	LP	2007-07-05
-	-	-	-
-	-	-	-
-	-	-	-

www.fciconnect.com		surface 3.2 ASME Y14.5	tolerance std -	projection mm
TOLERANCES UNLESS OTHERWISE SPECIFIED		ANGULAR LINEAR		mm
Dr	R. JOHNSON	05/04/02	0.X ±.30	size A4
Eng	D. JOHNESCU	05/04/02	0.XX ±.10	Scale 1:1
Chr	D. JOHNESCU	05/04/02	0.XXX ±.050	ECN V07-0440
Appr	D. JOHNESCU	05/04/02	Product family GIG-Array	Spec ref -
FCI		GIG-Array, PLUG ASSEMBLY		dwg no 10008026
		13mm, 296 SIGNAL POSITION		Rev. D
catalog no		CUSTOMER		sheet 1 of 4

REV F - 2006-04-17



Copyright FCI.



REV F - 2006-04-17



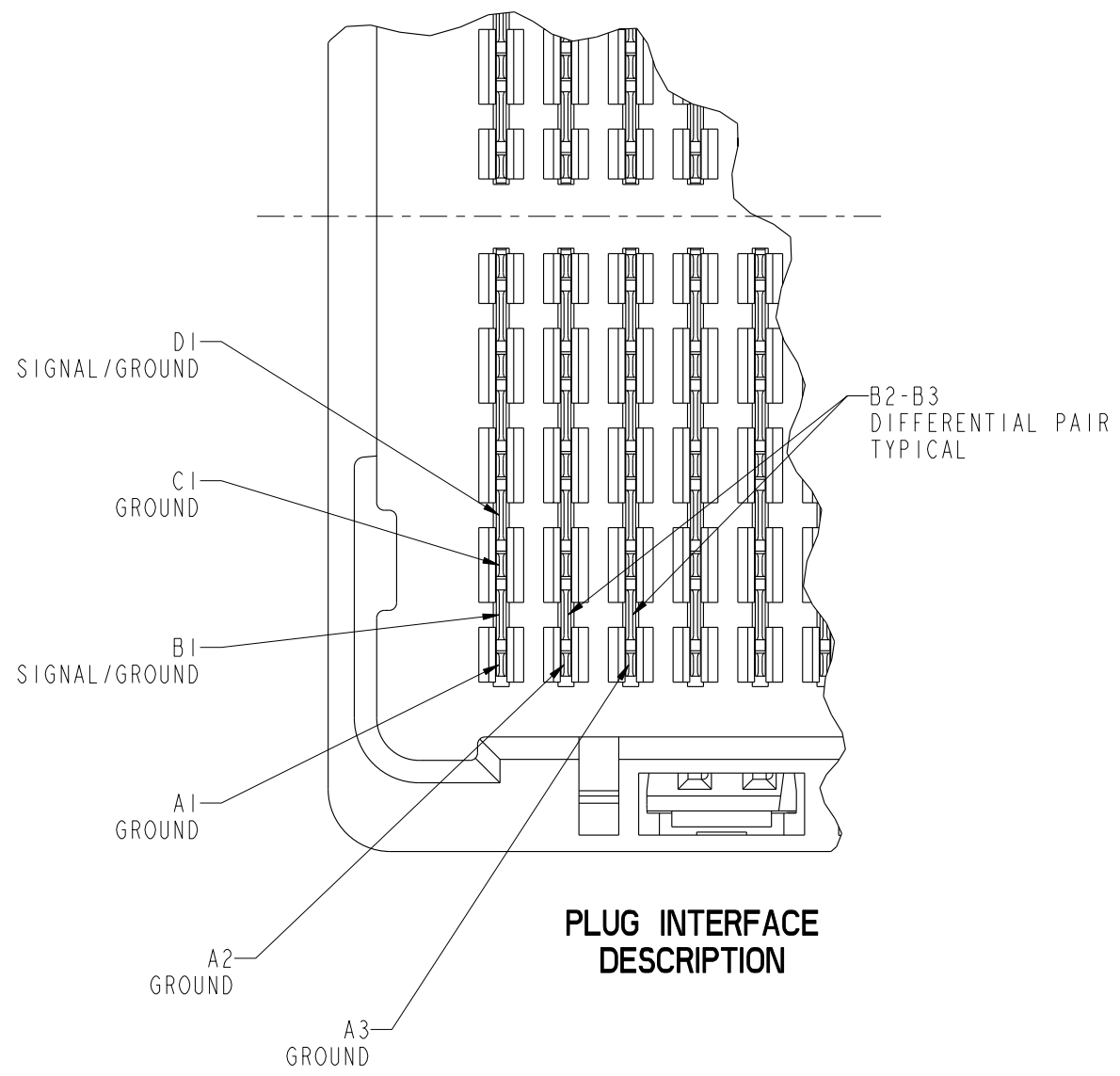
title GIG-Array, PLUG ASSEMBLY  
 13mm, 296 SIGNAL POSITION  
 catalog no -

dwg no 10008026  
 CUSTOMER

Rev. D  
 sheet 2 of 4



Copyright FCI.



### PLUG INTERFACE DESCRIPTION

REV F - 2006-04-17

	title	GIG-Array, PLUG ASSEMBLY		Rev.	D
		13mm, 296 SIGNAL POSITION			
	catalog no	-	CUSTOMER	sheet 3 of 4	

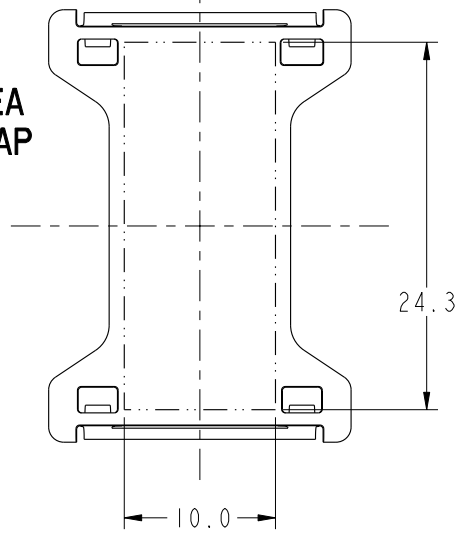
PDM: Rev:D

STATUS:Released

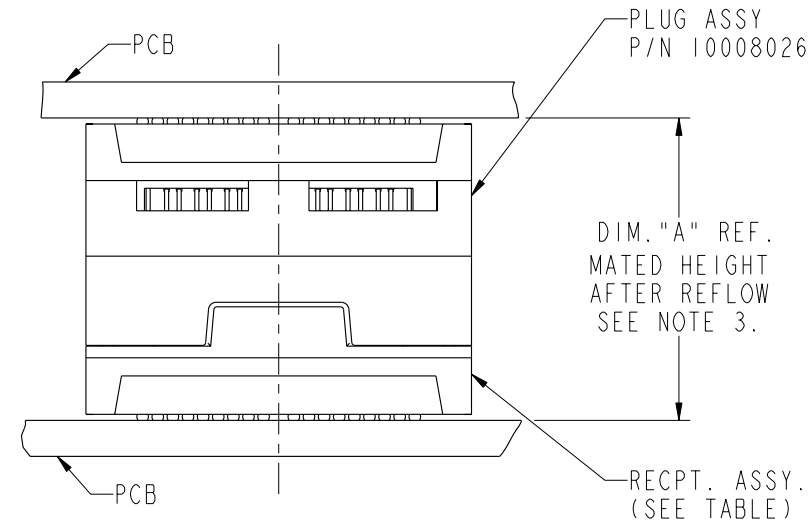
Printed: Dec 03, 2007

PRODUCT NUMBER	SOLDER BALLS
10008026-001	SnPb
10008026-001LF	SnAgCu LEADFREE (7)(8)

**FLAT AREA PICK-UP CAP**



**END VIEW OF MATED CONNECTORS**



DIM. "A"	RECPT. ASSY. P/N
18	55701
23	10032376
28	55733

NOT TOOLED

NOTES:

- ① MATERIAL:  
HOUSING: LCP  
CONTACT: COPPER ALLOY  
PLATING (CONTACT): Au OVER Ni.  
UL RATING: 94 V-0  
SOLDER BALL: (SEE TABLE) EUTECTIC SnPb OR LEADFREE 95.5 Sn/4Ag/0.5Cu
- ② SOLDER BALLS WILL NOT BE PERFECT SPHERICAL SHAPE DUE TO REFLOW ATTACHMENT.
- ③ MATED HEIGHT EFFECTED BY CUSTOMERS' PCB PAD SIZE, PLATING, SOLDER REFLOW PROFILE & SOLDER PASTE.
- ④ CONTACTS IN ROWS A,C,E,G,J,K,M,P,R AND T ARE SINGLE BEAM CONTACTS, TYPICALLY USED AS GROUND PINS.  
(NOTE: CONTACTS IN ROWS J & K ARE TIED TOGETHER [COMMONED])
- ⑤ CONTACTS IN ROWS B,D,F,H,L,N,Q AND S ARE DUAL BEAM CONTACTS, TYPICALLY USED AS SIGNAL PINS.

NOTES CONTINUED

- ⑥ SPECIFIED POSITIONAL TOLERANCE DEFINES PAD TO PAD LOCATION WITHIN LAND PATTERN. POSITIONAL TOLERANCE OF LAND PATTERN TO FUDICIAL MARKS OR PCB DATUMS SHALL BE DEFINED BY CUSTOMER. FOR RECOMMENDED PRODUCT APPLICATION AND PCB DESIGN DETAILS, SEE DOC. NO. GS-20-016.
- ⑦ FOR PROPER APPLICATION FOLLOW FCI APPLICATION SPECIFICATION GS-20-033 LEADFREE SOLDER BALLS WILL NOT SOLDER PROPERLY IN A LEADED SOLDER PROCESS DUE TO A HIGHER REFLOW TEMPERATURE, LEADFREE PRODUCT IS THEREFORE NOT BACKWARDS COMPATIBLE WITH LEADED OR SOME SOLDERING APPLICATIONS. REFERENCE FCI APPLICATION SPECIFICATION.
- ⑧ THIS PRODUCT MEETS THE EUROPEAN UNION DIRECTIVES AND OTHER COUNTRY REGULATIONS AS DESCRIBED IN GS-22-008. PRODUCT MEETING WITH THES DIRECTIVE IS IDENTIFIED IN THE LOT CODE NUMBER MARKED ON EACH PART BY HAVING AN "X" IN THE SEVENTH CHARACTER POSITION.



Copyright FCI.

	GIG-Array, PLUG ASSEMBLY 13mm, 296 SIGNAL POSITION	dwg no 10008026	Rev. D
	catalog no -	CUSTOMER	sheet 4 of 4

REV F - 2006-04-17