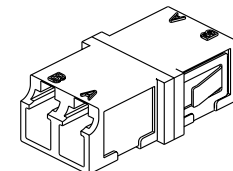


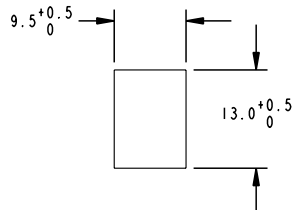
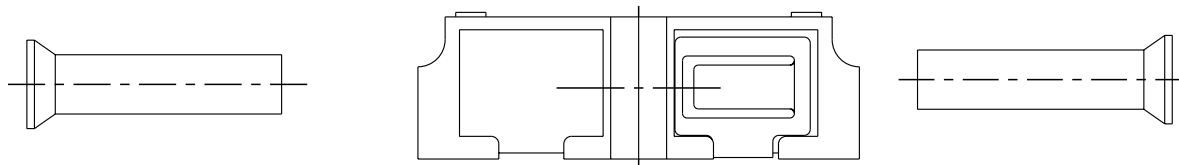
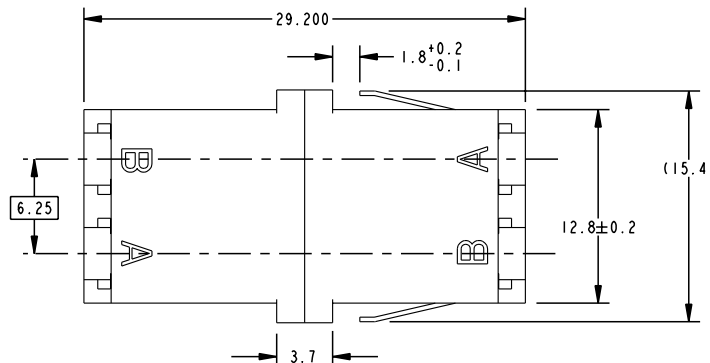
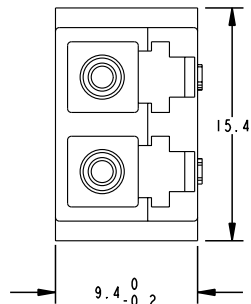
Tous droits strictement réservés. Reproduction ou communication o des tiers interdite sous quelque forme que ce soit sans autorisation écrite du propriétaire. Propriete de c FCI. Droits de reproduction FCI.

All rights strictly reserved. Reproduction or issue to third parties in any form whatever is not permitted without written authority from the proprietor. Property of FCI. Copyright FCI.

FCI P/N NOTE 3	SLEEVE MATERIAL	COLOR
10002264-077LF	PB	BEIGE
10002264-083LF	ZR	GREEN
10002264-085LF	ZR	BLUE



SCALE 1:1



ROCOMMENDED MOUNTING CUTOUT FOR 1.6 ± 0.05mm THICK PANEL  
SCALE 1:1

- NOTES:
- ALL DIMENSIONS ARE FOR REFERENCE ONLY.
  - DUST CAPS SHOWN - 4 REQUIRED.
  - THIS PRODUCT WITH "LF" SUFFIX MEETS EUROPEAN UNION DIRECTIVES AND OTHER COUNTRY REGULATIONS AS DESCRIBED IN GS-22-008. "LF" INDICATES THAT THE PRODUCT IS LEAD FREE.

mat'l code				SEE NOTES		tolerances unless otherwise specified		CUSTOMER		 www.fciconnect.com		
ltr	ecn no.	dr	date	linear	0.X ± 0.3		COPY		title ADP, LC-LC, DUP W/O FLNG, TYPE AP			
A	V20372	JJK	02/22/02		0.XX ± 0.10		projection					
B	V05-0635	DAI	8/10/05	angles	0.XXX ± 0.050		 MM scale 2:1		product family FIBER OPTICS		code	
					0° ± 2°				size		dwg no	
				dr	J. KILE	02/22/02			A		10002264	1 of 1
				enr	A. NICOLAS	3/7/02						
				chr	A. NICOLAS	02/22/02						
				appd	A. NICOLAS	02/22/02						
sheet index	revision sheet	B	1							cage code		22526

Pro/E

cage code 22526