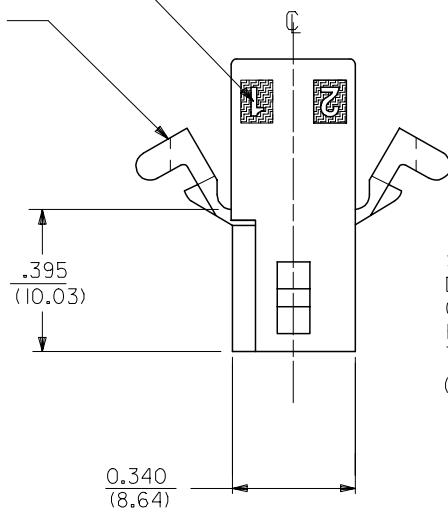
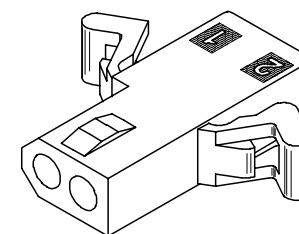
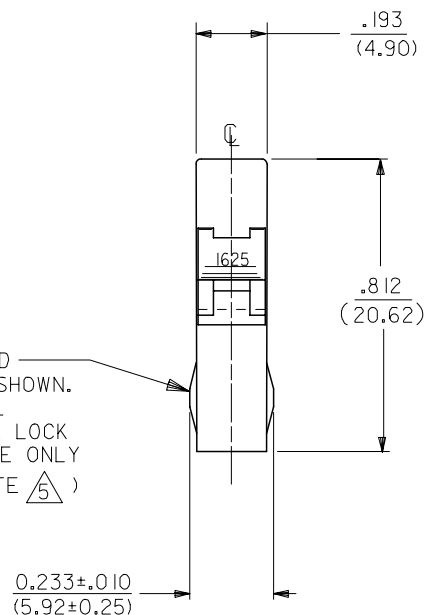


7 CIRCUIT I.D.

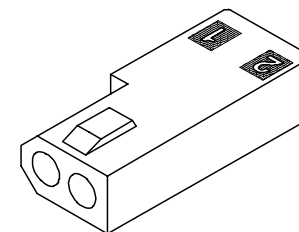
MOUNTING EAR (2 PL)
(WHEN SPECIFIED)
SEE DETAIL 3 OR 4



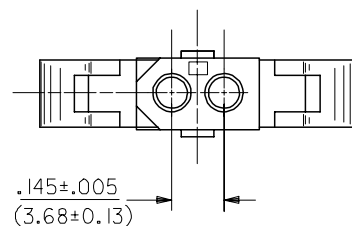
STANDARD _____
DETENT SHOWN.
OPTIONAL
POSITIVE LOCK
THIS SIDE ONLY
(SEE NOTE 5)





RECEPTACLE HOUSING
(I625-2R2 SHOWN)



RECEPTACLE HOUSING
(1625-2R3 SHOWN)



OPTIONAL POSITIVE LOCK
ONE SIDE ONLY
SCALE 4:1

UPDATE TITLE BLOCK EC NO: UCP2007-1980 DRAWN BY ORDER CHWKAELHAG APPROVED BY APPRFSMTTH 2007/04/13 2007/04/16 2007/04/19	DESCRIPTION	QUALITY SYMBOLS	GENERAL TOLERANCES (UNLESS SPECIFIED)		DIMENSION STYLE IN/MM		SCALE 4:1	DESIGN UNITS INCH	 THIRD ANGLE PROJECTION	
		▼=0			DRAWN BY	DATE	TITLE PLUG & RECEPTACLE 2 CIRCUIT HOUSINGS .062/(1.57) DIA. MOLEX MOLEX INCORPORATED			
		▽=0	4 PLACES	± ---	± ---	JJS		1988/04/14		
			3 PLACES	± ---	± .007	CHECKED BY		DATE		
			2 PLACES	± 0.18	± .010	RW		1988/04/14		
			1 PLACE	± 0.25	± ---	APPROVED BY		DATE		
			ANGULAR ± 1 °		RAS	1988/04/14				
					MATERIAL NO.		DOCUMENT NO.			SHEET NO.
			DRAFT WHERE APPLICABLE MUST REMAIN WITHIN DIMENSIONS		SEE CHART		SD-1625-2*		2 OF 3	
				THIS DRAWING CONTAINS INFORMATION THAT IS PROPRIETARY TO MOLEX INCORPORATED AND SHOULD NOT BE USED WITHOUT WRITTEN PERMISSION						

