

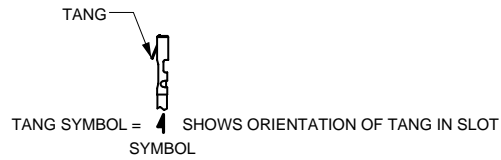
### Contura Accessories

To easily integrate Contura products into your system, Carlingswitch also offers many accessories, including:

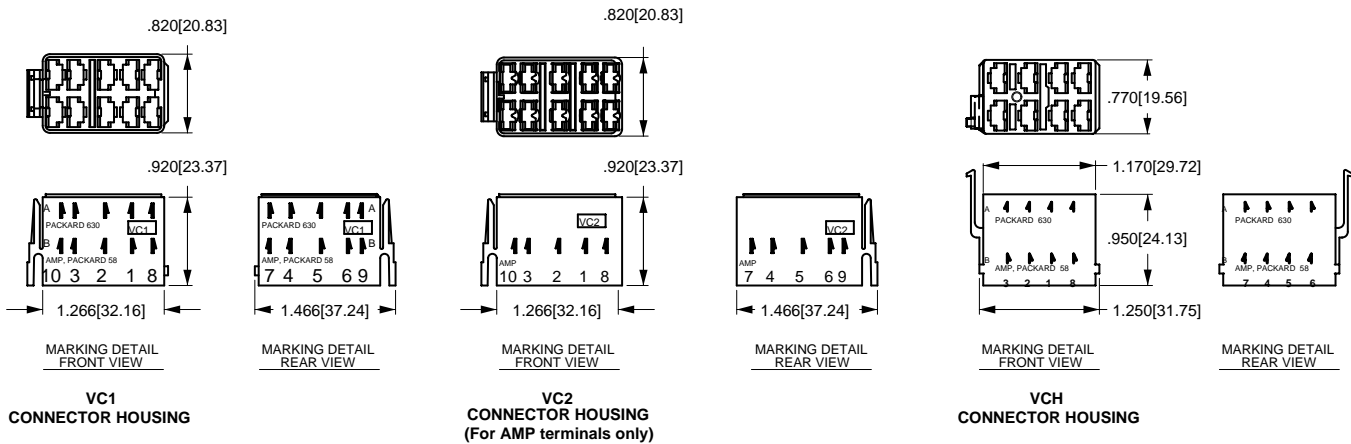
### Contura Connectors



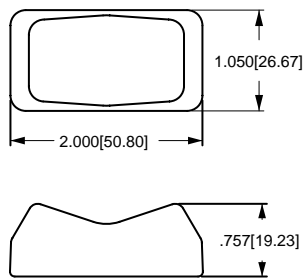
Q.C. SELECTION GUIDE					
COMPANY SERIES	PART NO		WIRE RANGE		ORIENTATION
	PLAIN BRASS	TIN PLATED BRASS	AWG	MM <sup>2</sup> (REF)	
PACKARD 58 SERIES	02965580		12	3.0	B
	02965471	12010601	(2)16-14	(2)1.0-2.0	
	02965470		16-14	1.0-2.0	
	02965469	06288318	20-18	.5-8	
PACKARD METRI-PACK 630 SERIES		12084590	12	3.0	A
		12052224	12	3.0	
		12015870	16-14	1.0-2.0	
		12020035	(2)22-18	(2).5-.8	
	12015832	12015869	20-18	.5-.8	
		12052222	20-22	.35-.5	
AMP 250 SERIES FASTIN-FASTON	60253-1	60253-2	16-12	1.3-3	B
	42100-1	42100-2	(2) 16	(2) 1.3	
	60295-1	60295-2	18-14	.8-2	
		22-18	.3-9		



**NOTE:** Consult Delphi Packard and/or Amp on actual part numbers and availability.  
AMP is a registered trademark of AMP Inc. Harrisburg, PA  
Delphi Packard is a registered trademark of Delphi-Packard Electrical Systems Warren, Ohio



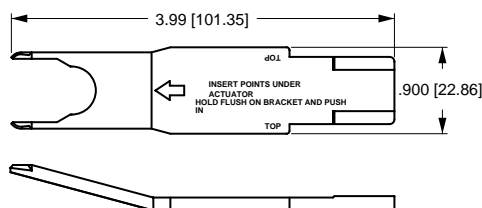
### Contura X Boot



VB1-01  
CONTURA X BOOT



### Contura II, II & IV Actuator Removal Tool



VRT  
ACTUATOR REMOVAL  
TOOL  
(For flush bracket)



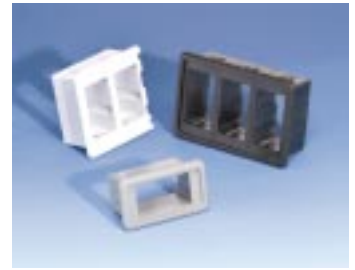
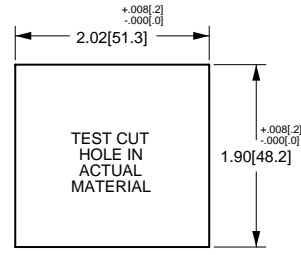
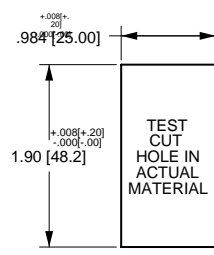
**Contura Mounting Panels**

**MOUNTING PANEL**

For additional units, add 1.03[26.2] per unit.  
For more than 2 V-Series Switches, add middle section. Available in Panel Thicknesses listed below. Consult factory.

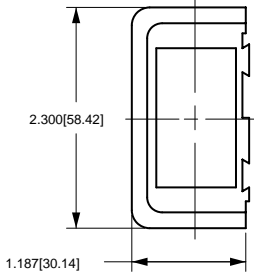
**MOUNTING PANEL THICKNESS**

.062[1.57]	.187[4.75]
.093[2.36]	.250[6.35]
.125[3.17]	.375[9.52]

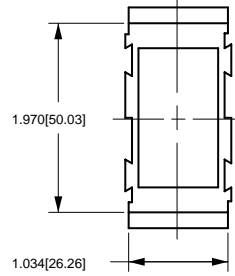


**VMS MOUNTING PANEL HOLE**

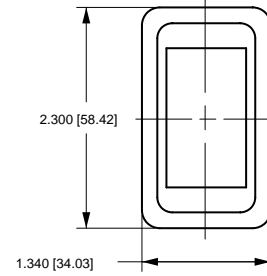
**MOUNTING PANEL OPENING (2) UNITS**



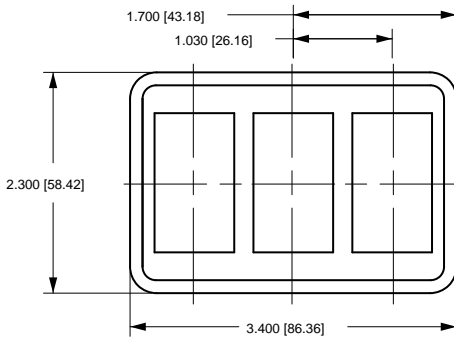
**VME MOUNTING PANEL END**



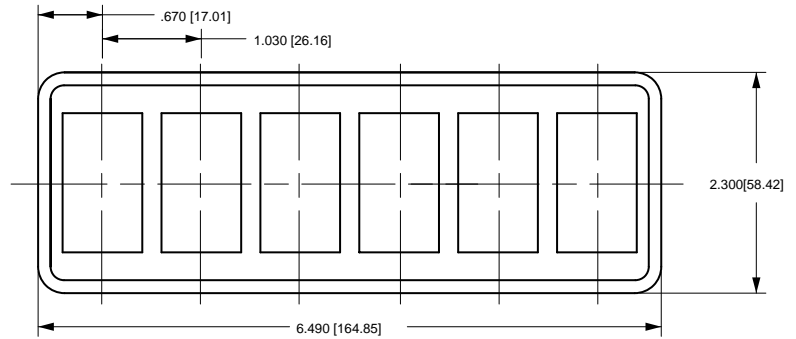
**VMM MOUNTING PANEL MIDDLE**



**VMS MOUNTING PANEL**

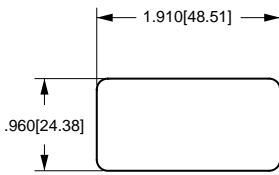
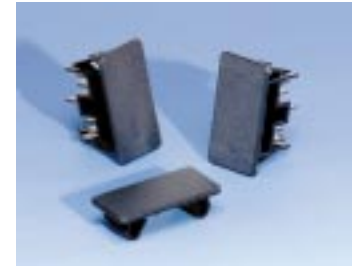
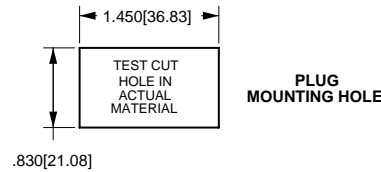


**VM3 MOUNTING PANEL**

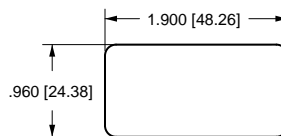


**VM6 MOUNTING PANEL**

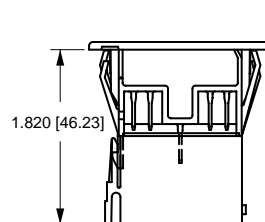
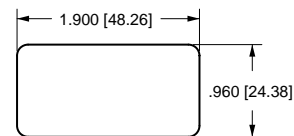
**Contura Hole Plug**



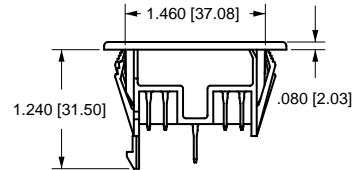
**VHP MOUNTING PANEL PLUG**



**DETAIL VIEW VH1 HOLE PLUG (No wing serrations for ease of removal)**



**VH1 HOLE PLUG (No wing serrations) (With VC1 connector attached)**



**VH2 HOLE PLUG (With wing serrations)**



**DETAIL VIEW VH2 HOLE PLUG (With wing serrations)**