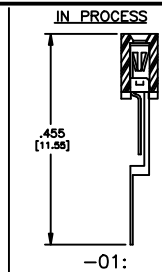
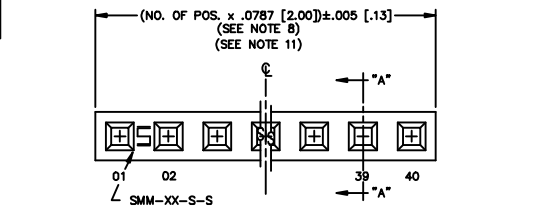


AQ  
DO NOT SCALE FROM THIS PRINT

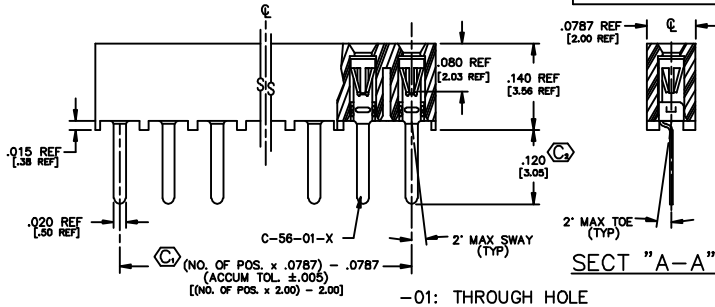


NOTES:

1. RETENTION FORCE IN BODY TO BE: 1 lbs. MIN
2. INSERTION FORCE TO BE: 3.0 oz. MAX.
3. WITHDRAWAL FORCE TO BE: 0.4 oz. MIN.
4. ⊕ REPRESENTS CRITICAL DIMS. FOR STATISTICAL PROCESS CONTROL.
5. [ ] DIMS ARE IN METRIC AND ARE NOT CONTROLLING DIMS.
- 6.) SMM-105-01-X THRU SMM-140-01-X MUST USE PT-1-24-01-12.
- 7.) "-LC" OPTION FOR A 02 POSITION WILL HAVE ONLY ONE LOCKING CLIP (LC-05-T).
- 8.) "END WALLS" AFTER CUTTING SHOULD BE .017±.005.
- 9.) ALL OPTIONS: PACKAGE POSITIONS -04 THRU -40 IN TUBES. LAYER PACKAGE POSITIONS -02 & -03 WITH NO OPTIONS.
- 10.) -02 THRU -05 POSITION WITH -K OR -P TO BE PACKAGED IN -TR ONLY. -06 THRU -40 POSITION AVAILABLE IN TUBE OR -TR PACKAGING.
- 11.) MAX CUT FLASH: .010[.25]

TUBE PACKAGING TABLE

LEAD STYLE	TUBE	PLUG
-01	PT-1-24-01-12	TP-12
-01-P	PT-1-24-02-29	TP-24
-02	PT-1-24-01-16	TP-12
-02-K, -02-LC, -02-LC-K	PT-1-24-02-29	TP-24
-02-P	PT-1-24-07-09	TP-24-02



\* PINS INTERLEAVED AND ORIENTED SAME DIRECTION FOR -01 ONLY

UNLESS OTHERWISE NOTED TOLERANCES ARE DIMENSIONS ARE IN INCHES

ONE PLACE DECIMALS: ±.1  
TWO PLACE DECIMALS: ±.01

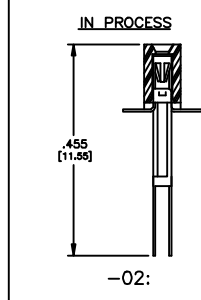
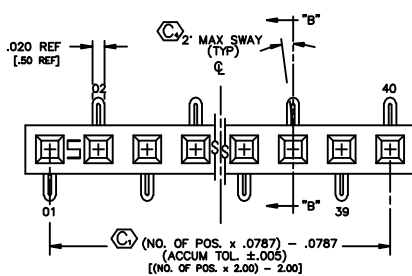
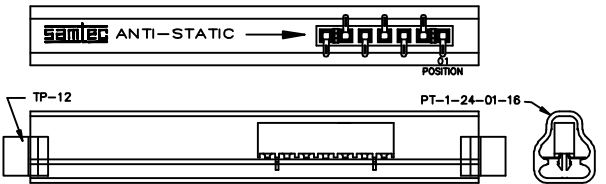
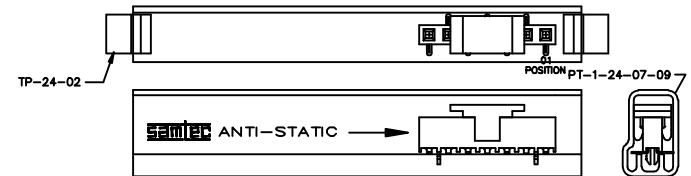
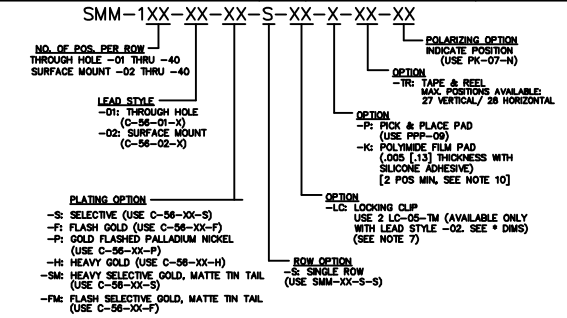
THREE PLACE DECIMALS: ±.005  
FOUR PLACE DECIMALS: ±.0020

ANGLES ±1°

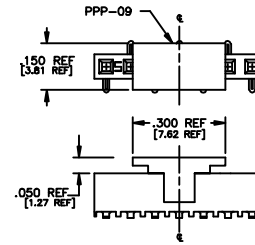
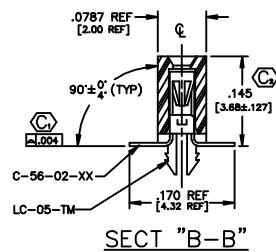
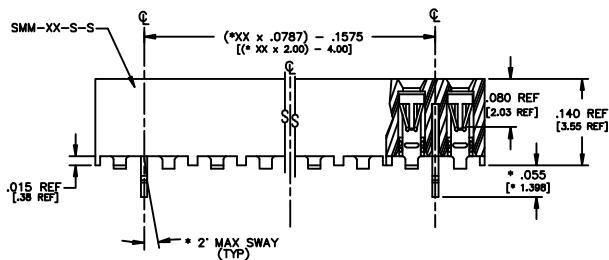
TITLE: 2 mm SOCKET STRIP (SINGLE ROW)

DWG NO: SMM-1XX-XX-XX-X-XX-XX

SHEET 1 OF 1

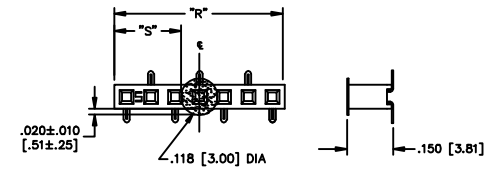


PACKAGE PARTS IN TUBE AS SHOWN (POSITION PARTS WITH POS. -01 TOWARD ARROW AS SHOWN)



-P: PICK AND PLACE PAD (PLACE PPP-09 ABOUT C.L. AS SHOWN)

-K: POLYIMIDE FILM PAD [2 POSITION MINIMUM, SEE NOTE 10]



NOTE: "R" = USED MEASURED DIMENSION (RF)  
"S" = {("R" - .118 [3.0]) / 2} ±.020 [.51]

1/2 SCALE

PROPRIETARY NOTE  
This document contains information that is the property of Samtec Inc. and is intended for use only by the recipient. It is not to be distributed, copied, or reproduced in any form without the written consent of Samtec Inc.

EXPRESS ASSURANCE SMM-1XX-XX-XX-X-XX-XX

**samtec**

520 PARK EAST BLVD. NEW ALBANY, INDIANA 47150  
PHONE (812) 944-6733 P.O. BOX 1147  
CODE 58322

MADE BY: MATT KOSAR S-22-91  
ORDER FR: MCCARTIN

SMM-1XX-XX-XX-X-XX-XX  
SHEET 1 OF 1