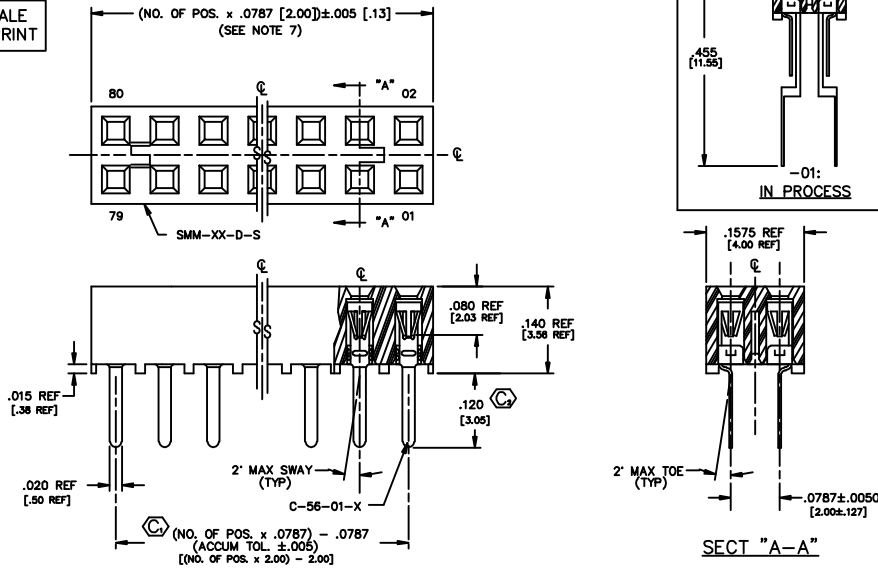


REVISIONS AN

DO NOT SCALE FROM THIS PRINT

FIG. 1

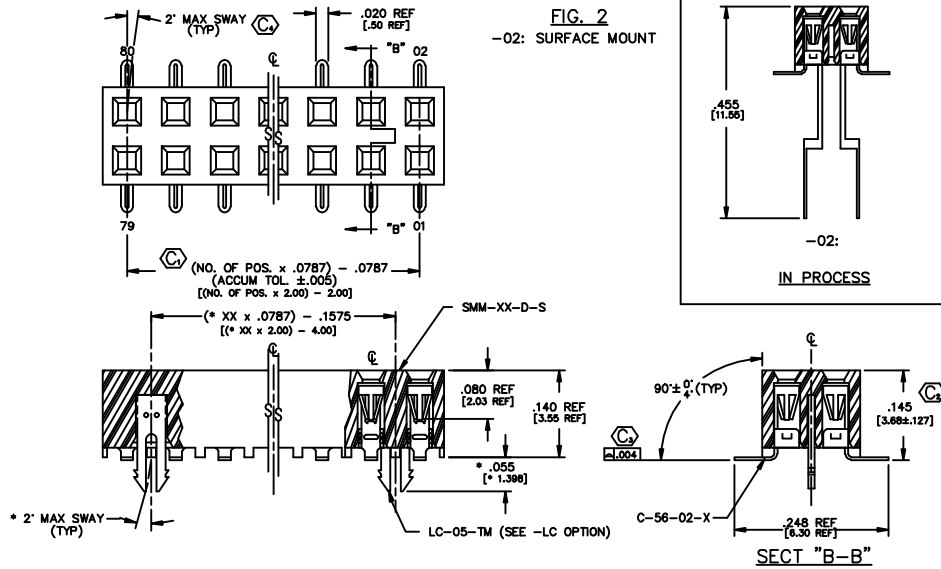
-01: THROUGH HOLE



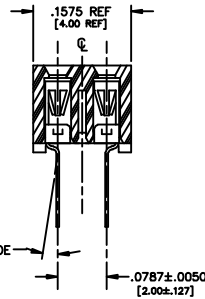
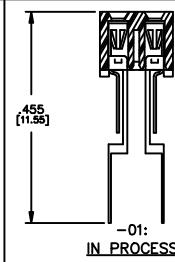
SECT "A-A"

FIG. 2

-02: SURFACE MOUNT



SECT "B-B"



DIMENSIONS ARE IN INCHES UNLESS OTHERWISE NOTED		TOLERANCES ARE		TITLE: 2 mm SOCKET STRIP	DWG NO: SMM-XX-XX-XX-D-XX-XX-X-XX
ONE PLACE DECIMALS: ±.1	THREE PLACE DECIMALS: ±.005	ANGLES	±1°		SHEET 1 OF 2
TWO PLACE DECIMALS: ±.01	FOUR PLACE DECIMALS: ±.0020				

NOTES:

- RETENTION FORCE IN BODY TO BE: 1 lbs. MIN
- INSERTION FORCE TO BE: 3.0 oz. MAX.
- WITHDRAWAL FORCE TO BE: 0.5 oz. MIN.
- ⊙ REPRESENTS CRITICAL DIMS. FOR STATISTICAL PROCESS CONTROL.
- [ ] DIMS ARE IN METRIC AND ARE NOT CONTROLLING DIMS.
- LC OPTION FOR A 02 POSITION WILL HAVE ONLY ONE LOCKING CLIP (LC-05-T).
- "END WALLS" AFTER CUTTING SHOULD BE .017±.005.
- FOR -01 LEAD STYLE, LAYER PACKAGE POSITIONS -01 THRU -04.
- FOR -02 LEAD STYLE WITHOUT PICK & PLACE PAD, LAYER PACKAGE POSITION -02 ONLY.
- 02 THRU -05 POSITION WITH -K OR -P TO BE PACKAGED IN -TR ONLY. -06 THRU -40 POSITION AVAILABLE IN TUBE OR -TR PACKAGING.
- .010" MAX CUT FLASH.
- NO FLASH ALLOWED IN SOCKET OR EXTENDING BELOW LEADS.

SMM-1XX-XX-XX-D-XX-XX-X-XX

- NO. OF POS. PER ROW THROUGH HOLE: -01 THRU -40  
SURFACE MOUNT: -02 THRU -40
- LEAD STYLE  
-01: THROUGH HOLE  
-02: SURFACE MOUNT (C-56-02-X)
- PLATING OPTION  
-S: SELECTIVE (USE C-56-XX-S)  
-F: FLASH GOLD (USE C-56-XX-F)  
-P: GOLD FLASHED PALLADIUM NICKEL (USE C-56-XX-P)  
-H: HEAVY GOLD (USE C-56-XX-H)  
-SM: HEAVY SELECTIVE GOLD, MATTE TIN TAIL (USE C-56-XX-S)  
-FM: FLASH SELECTIVE GOLD, MATTE TIN TAIL (USE C-56-XX-F)

- OPTION 1  
-P: PICK AND PLACE PAD (USE PPP-03) (SEE FIG 3)  
-K: POLYAMIDE FILM PAD (USE K-500-300) (.005 [0.13] THICKNESS WITH SILICONE ADHESIVE. SEE FIG 4) (AVAILABLE ON LEAD STYLE -02 ONLY)
- OPTION 2  
-P: PICK AND PLACE PAD (USE PPP-03) (SEE FIG 3)  
-K: POLYAMIDE FILM PAD (USE K-500-300) (.005 [0.13] THICKNESS WITH SILICONE ADHESIVE. SEE FIG 4) (AVAILABLE ON LEAD STYLE -02 ONLY)

- OPTION 1  
-LC: LOCKING CLIP (USE 2 LC-05-TM) (AVAILABLE ONLY WITH LEAD STYLE -02, SEE 4 DIMS, SEE NOTE 6, SEE FIG 2)
- POLARIZING OPTION  
INDICATE POSITION (USE PK-07-H)

"R" = No of POS x .0787 [2.00]  
"S" = {"R" - .394}/2 ±.020

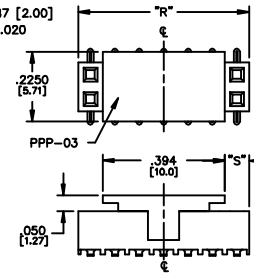
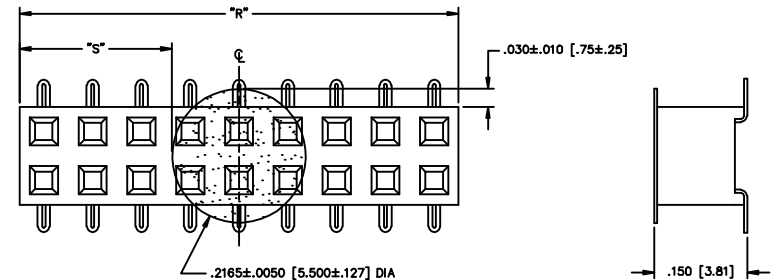


FIG. 3

-P: PICK AND PLACE PAD (PLACE PPP-03 ABOUT C.L. AS SHOWN) (SEE NOTE 10)



NOTE: "R" = USED MEASURED DIMENSION (REF)  
"S" = {"R" - .2165 [5.50]} / 2 ±.020 [.51]

FIG. 4

-K: POLYAMIDE FILM PAD [2 POSITION MINIMUM, SEE NOTE 10]

PROPRIETARY NOTE  
THIS DRAWING AND INFORMATION CONTAINED HEREIN ARE THE PROPERTY OF SAMTEC CORPORATION. NO PART OF THIS DRAWING OR INFORMATION IS TO BE REPRODUCED, COPIED, OR TRANSMITTED IN ANY FORM OR BY ANY MEANS, ELECTRONIC OR MECHANICAL, INCLUDING PHOTOCOPYING, RECORDING, OR BY ANY INFORMATION STORAGE AND RETRIEVAL SYSTEM, WITHOUT THE WRITTEN PERMISSION OF SAMTEC CORP.

DESIGN/ASSEMBLY/SAM  
SMM-100-XX-X-D-XX-X-XX-XX-XX-XX

**samtec**

520 PARK EAST BLVD. NEW ALBANY, INDIANA 47150  
PHONE (812) 944-8733 P.O. BOX 1147  
CODE 68322

MADE BY: KOLB 5-21-91

SMM-1XX-XX-XX-D-XX-XX-X-XX  
SHEET 1 OF 2